

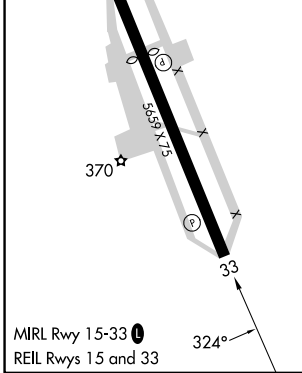
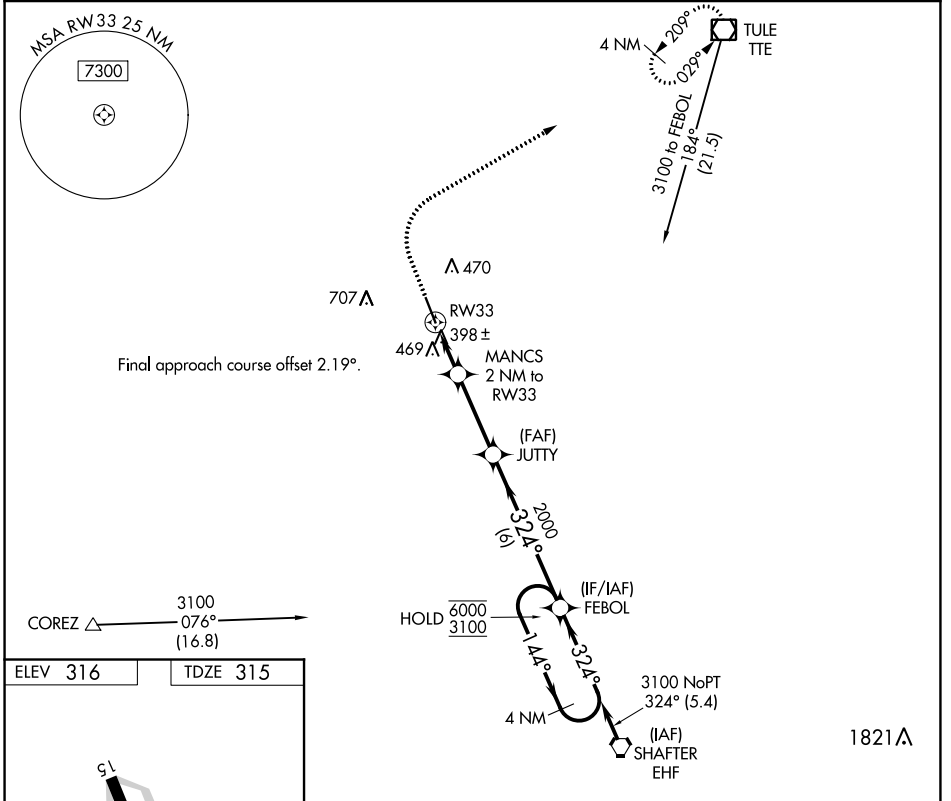
APP CRS	Rwy Idg	5659
324°	TDZE	315
	Apt Elev	316

RNAV (GPS) RWY 33

DELANO MUNI (DLO)

RNP APCH - GPS.	MISSED APPROACH: Climb to 800 then climbing right turn to 3100 direct TTE VOR/DME and hold.
<p>▼ Circling NA southwest of Rwy 15-33.</p> <p>▲ When local altimeter setting not received, procedure NA.</p>	

AWOS-3P 119.55	BAKERSFIELD APP CON ★ 118.9	UNICOM 122.8 (CTAF) 0
--------------------------	---------------------------------------	---------------------------------



800	3100	TTE	VGSIs and descent angles not coincident.			
↑	↷	☐	MANCS	JUTTY	FEBOL	4 NM Holding Pattern
			2 NM to RWY 33			
			1.2 NM to RWY 33	≤ 3.00° TCH 40	324°	144°
			1000	2000	3100	6000
			1.2 NM	0.9 NM	3.1 NM	6 NM
CATEGORY	A		B		C	
LNAV MDA	720-1 405 (500-1)		720-1½ 405 (500-1½)			
CIRCLING	760-1 444 (500-1)		780-1 464 (500-1)		820-1½ 504 (600-1½) 960-2 644 (700-2)	

SW-3, 28 NOV 2024 to 26 DEC 2024

SW-3, 28 NOV 2024 to 26 DEC 2024