

WAAS CH 99507 W01A	APP CRS 009°	Rwy ldg TDZE Apt Elev	5499 990 988
---------------------------------	------------------------	-----------------------------	---

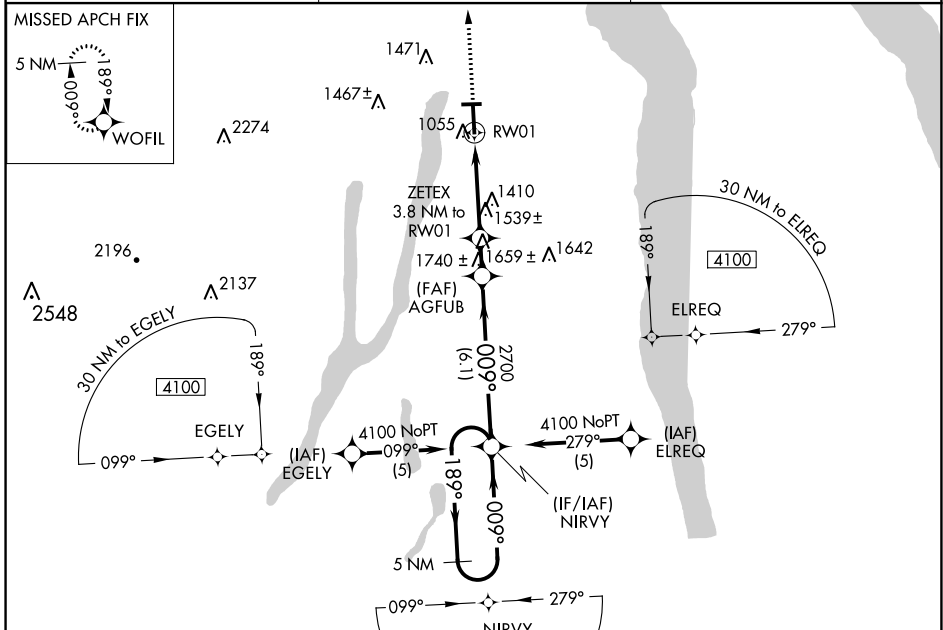
RNAV (GPS) RWY 1

PENN YAN/YATES COUNTY (P.E.O)

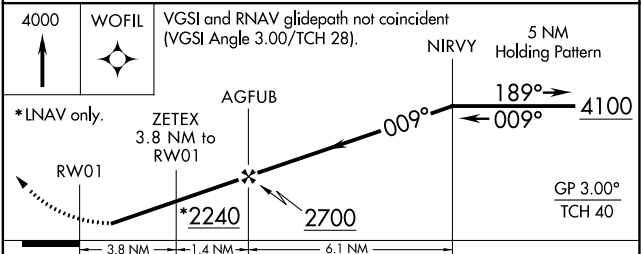
⚠ When local altimeter setting not received, use Elmira altimeter setting: increase LPV DA to 1433 feet and visibility all Cats ¼ SM; increase all MDA 80 feet and visibility LNAV Cat A and Circling Cat C ¼ SM and LNAV Cat C and D ½ SM. DME/DME RNP-0.3 NA. Helicopter visibility reduction below ¾ SM NA.

⚠ MISSED APPROACH: Climb to 4000 direct WOFIL and hold, continue climb in hold to 4000.

ASOS 121.175	ELMIRA APP CON* 124.3 257.8	UNICOM 123.0 (CTAF) 0
------------------------	---------------------------------------	---------------------------------



ELEV 988	TDZE 990
----------	----------



CATEGORY	A	B	C	D
LPV DA	1360-1¼ 370 (400-1¼)			
LNAV MDA	1800-1 810 (900-1)	1800-1¼ 810 (900-1¼)	1800-2¼ 810 (900-2¼)	1800-2½ 810 (900-2½)
CIRCLING	1800-1¼	812 (900-1¼)	1820-2½ 832 (900-2½)	1980-3 992 (1000-3)

NE-2, 28 NOV 2024 to 26 DEC 2024

NE-2, 28 NOV 2024 to 26 DEC 2024