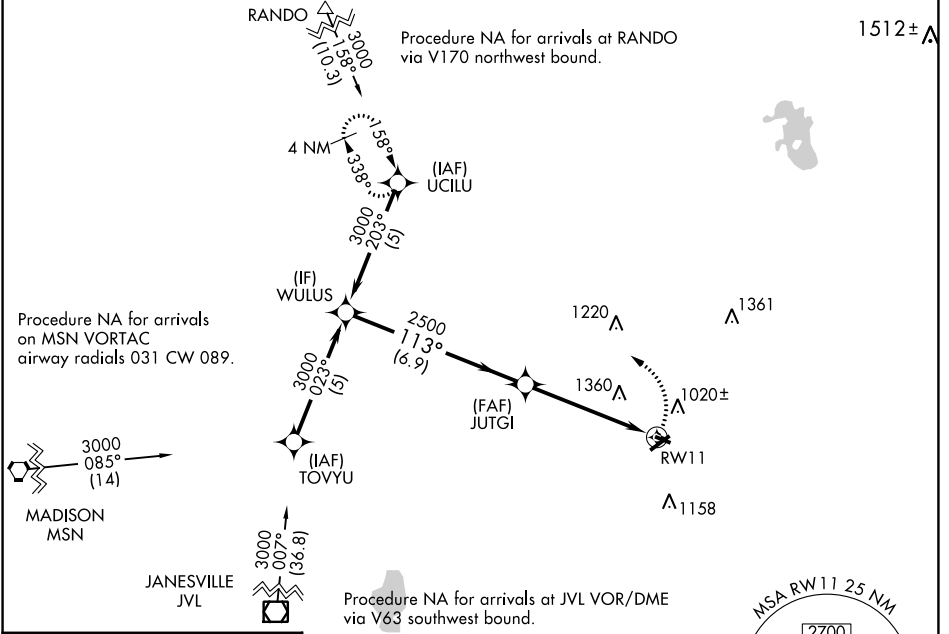


APP CRS <b>113°</b>	Rwy Idg <b>2801</b>
	TDZE <b>833</b>
	Apt Elev <b>833</b>

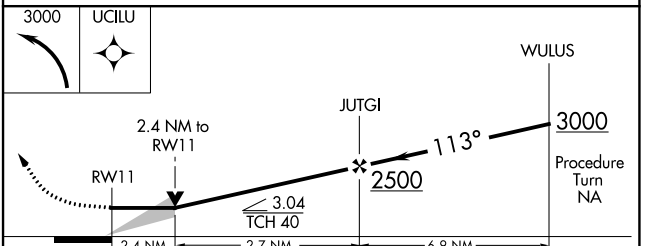
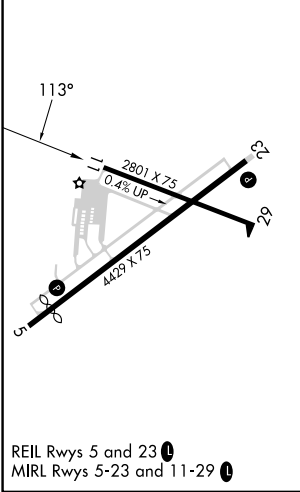
# RNAV (GPS) RWY 11

WATERTOWN MUNI (RYV)

RNP APCH.		MISSED APPROACH: Climbing left turn to 3000 direct UCILU and hold.
<p><b>⚠</b> When local altimeter setting not received, use Dodge County altimeter setting and increase all MDAs 60 feet and Circling visibility Cat A ¼ SM. VDP NA when using Dodge County altimeter setting. Circling Rwy 23 NA at night.</p>		
AWOS-3 <b>119.975</b>	MADISON APP CON * <b>119.15 343.7</b>	UNICOM <b>122.8 (CTAF) 0</b>



ELEV 833	<b>D</b>	TDZE 833
----------	----------	----------



	A	B	C	D
CATEGORY	A	B	C	D
LNAV MDA	1640-1 807 (900-1)	1640-1¼ 807 (900-1¼)	1640-2½	807 (900-2½)
CIRCLING	1640-1 807 (900-1)	1640-1¼ 807 (900-1¼)	1720-2¾ 887 (900-2¾)	1720-3 887 (900-3)

EC-3, 28 NOV 2024 to 26 DEC 2024

EC-3, 28 NOV 2024 to 26 DEC 2024