

APP CRS	Rwy Idg	4429
234°	TDZE	823
	Apt Elev	833

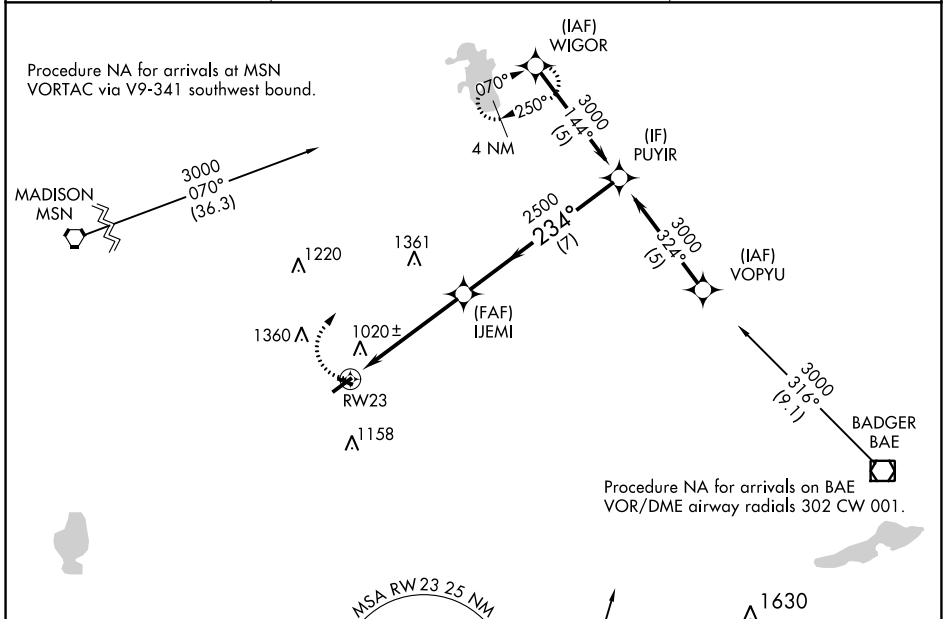
RNAV (GPS) RWY 23

WATERTOWN MUNI (RYV)

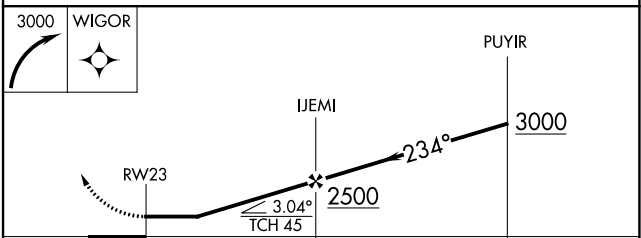
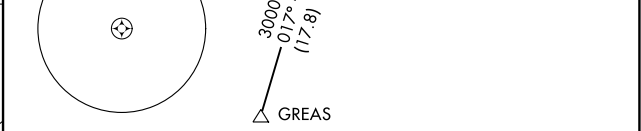
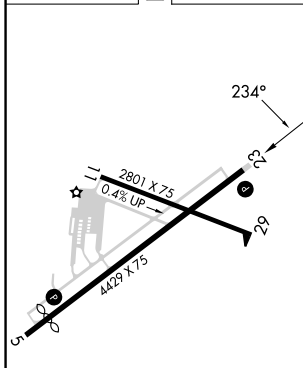
⚠ Rwy 23 helicopter visibility reduction below 1 SM NA. DME/DME RNP-0.3 NA. When local altimeter setting not received, use Dodge County altimeter setting and increase all MDAs 60 feet, increase LNAV Cat C and D visibility 1/8 SM. Straight-in Rwy 23 NA at night, Circling Rwy 23 NA at night.

⚠ MISSED APPROACH: Climbing right turn to 3000 direct WIGOR and hold.

AWOS-3 119.975	MADISON APP CON * 119.15 343.7	UNICOM 122.8 (CTAF)
--------------------------	--	-------------------------------



ELEV 833	D	TDZE 823
----------	----------	----------



CATEGORY	A	B	C	D
LNAV MDA	1420-1	597 (600-1)	1420-1¾ 597 (600-1¾)	1420-1¾ 597 (600-1¾)
CIRCLING	1420-1 587 (600-1)	1440-1 607 (700-1)	1720-2¾ 887 (900-2¾)	1720-3 887 (900-3)

REIL Rwy 5 and 23 **Ⓛ**
MIRL Rwy 5-23 and 11-29 **Ⓛ**

EC-3, 28 NOV 2024 to 26 DEC 2024

EC-3, 28 NOV 2024 to 26 DEC 2024