

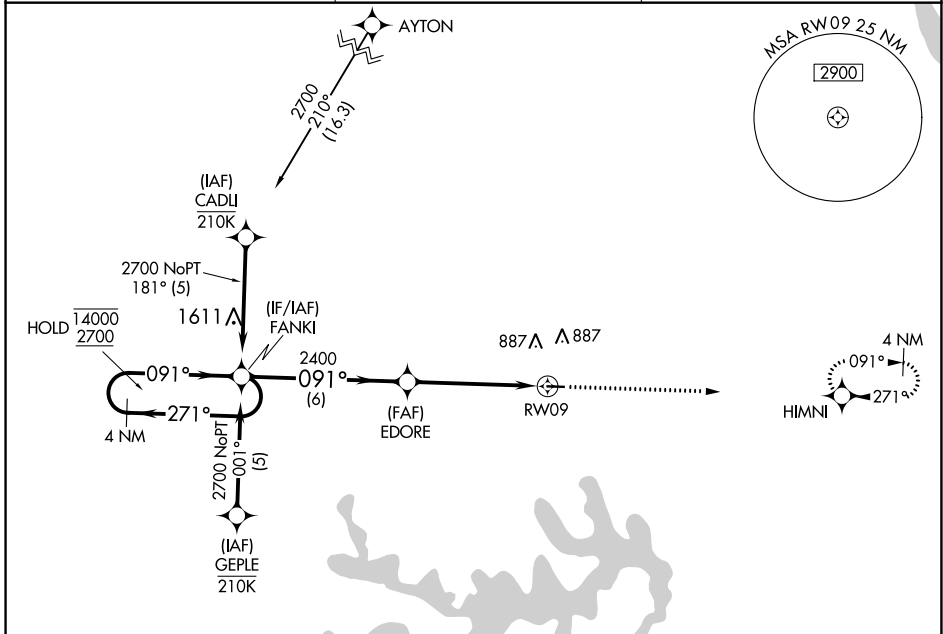
APP CRS	Rwy Idg	3515
091°	TDZE	737
	Apt Elev	737

RNAV (GPS) RWY 9

CPT BEN SMITH AIRFIELD/MONROE CITY (K52)

RNP APCH - GPS.	MISSED APPROACH: Climb to 2600 direct HIMNI and hold.
<p>▼ Procedure NA at night. Rwy 9 helicopter visibility reduction below 1 SM NA. Use Quincy, IL altimeter setting.</p> <p>▲ NA</p>	

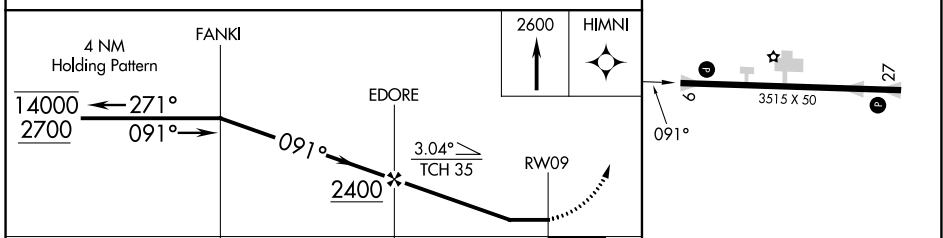
<p>UN ASOS</p> <p>121.425</p>	<p>KANSAS CITY CENTER</p> <p>126.225 317.775</p>	<p>UNICOM</p> <p>122.8 (CTAF)</p>
--------------------------------------	---	--



NC-3, 28 NOV 2024 to 26 DEC 2024

NC-3, 28 NOV 2024 to 26 DEC 2024

ELEV 737	TDZE 737
----------	----------



CATEGORY	A	B	C	D
LNVA MDA	1280-1	543 (600-1)	1280-1 $\frac{1}{8}$ 543 (600-1 $\frac{1}{8}$)	NA
C CIRCLING	1380-1	643 (700-1)	1380-1 $\frac{3}{4}$ 643 (700-1 $\frac{3}{4}$)	NA

MIRL Rwy 9-27

RNAV (GPS) RWY 9