

APP CRS 002°	Rwy Idg 5001
	TDZE 673
	Apt Elev 679

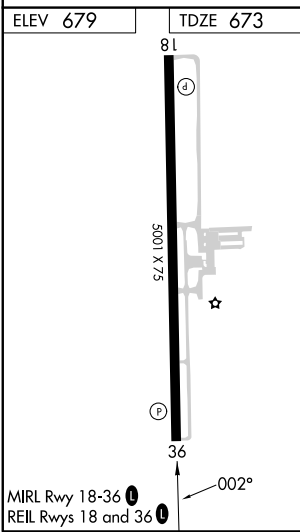
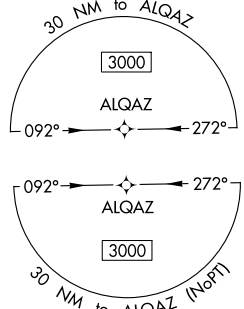
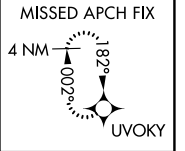
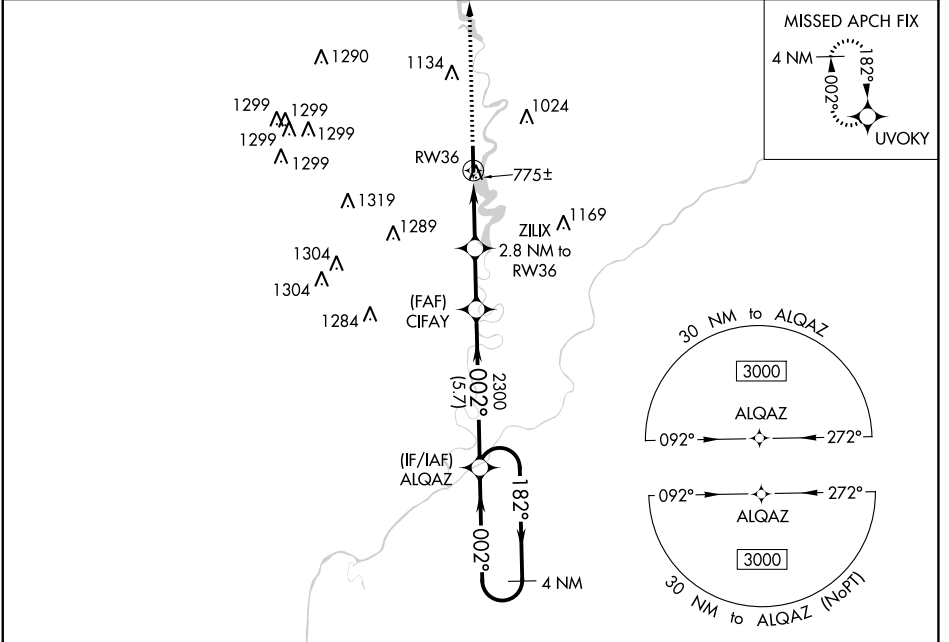
RNAV (GPS) RWY 36

WHITE COUNTY (MCX)

▽ DME/DME RNP-0.3 NA. Straight-in Rwy 36 NA at night, Circling Rwy 36 NA at night. Rwy 36 helicopter visibility reduction below 1 SM NA.

▲ MISSED APPROACH: Climb to 3000 direct UVOKY and hold.

AWOS-3P 124.05	GRISSOM APP CON ★ 123.85 291.675	UNICOM 122.8 (CTAF) 0
--------------------------	--	---------------------------------



3000	UVOKY	VGSJ and descent angles not coincident (VGSJ Angle 4.00/TCH 25).		4 NM
↑	★	ZILIX 2.8 NM to RW36	CIFAY	ALQAZ Holding Pattern
		RW36	1600	2300
		2.8 NM	2.2 NM	5.7 NM
3000			182° →	← 002°
			002°	3000
CATEGORY	A	B	C	D
LNAV MDA	1040-1 367 (400-1)			
C CIRCLING	1200-1 521 (600-1)	1340-1 661 (700-1)	1500-2½ 821 (900-2½)	1500-2¾ 821 (900-2¾)

EC-2, 28 NOV 2024 to 26 DEC 2024

EC-2, 28 NOV 2024 to 26 DEC 2024