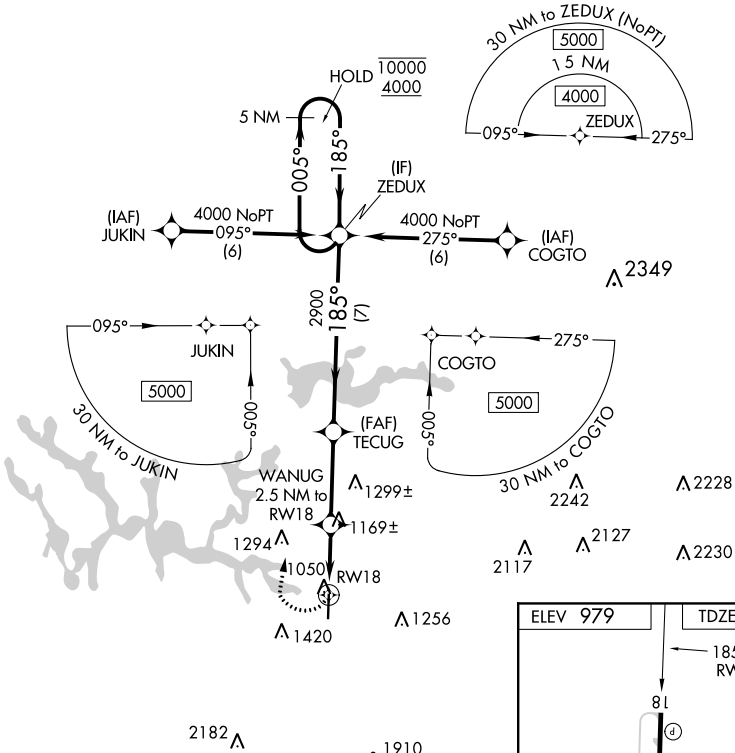


APP CRS	Rwy Idg	<b>5003</b>
<b>185°</b>	TDZE	<b>978</b>
	Apt Elev	<b>979</b>

# RNAV (GPS) Y RWY 18

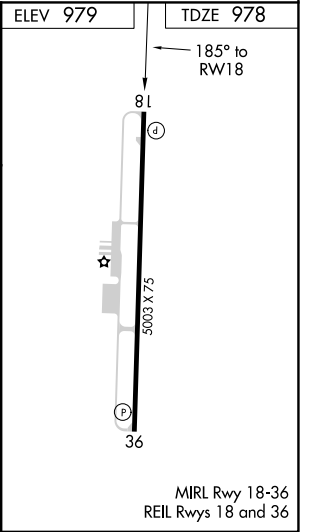
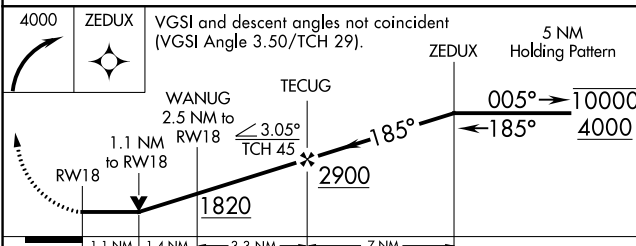
WINCHESTER MUNI (BGF)

RNP APCH.		MISSED APPROACH: Climbing right turn to 4000 direct ZEDUX and hold.	
Rwy 18 helicopter visibility reduction below 3/4 SM NA.		AWOS-3 <b>121.675</b>	MEMPHIS CENTER <b>128.15 323.125</b>
		GCO <b>121.725</b>	UNICOM <b>122.8 (CTAF)</b>



SE-1, 28 NOV 2024 to 26 DEC 2024

SE-1, 28 NOV 2024 to 26 DEC 2024



CATEGORY	A	B	C	D
LNVA MDA	1420-1	442 (500-1)	1420-1 3/8 442 (500-1 3/8)	1420-1 1/2 442 (500-1 1/2)
CIRCLING	1480-1 501 (600-1)	1780-1 801 (900-1)	1820-2 1/2 841 (900-2 1/2)	2380-3 1401 (1500-3)

MIRL Rwy 18-36  
REIL Rwy 18 and 36