

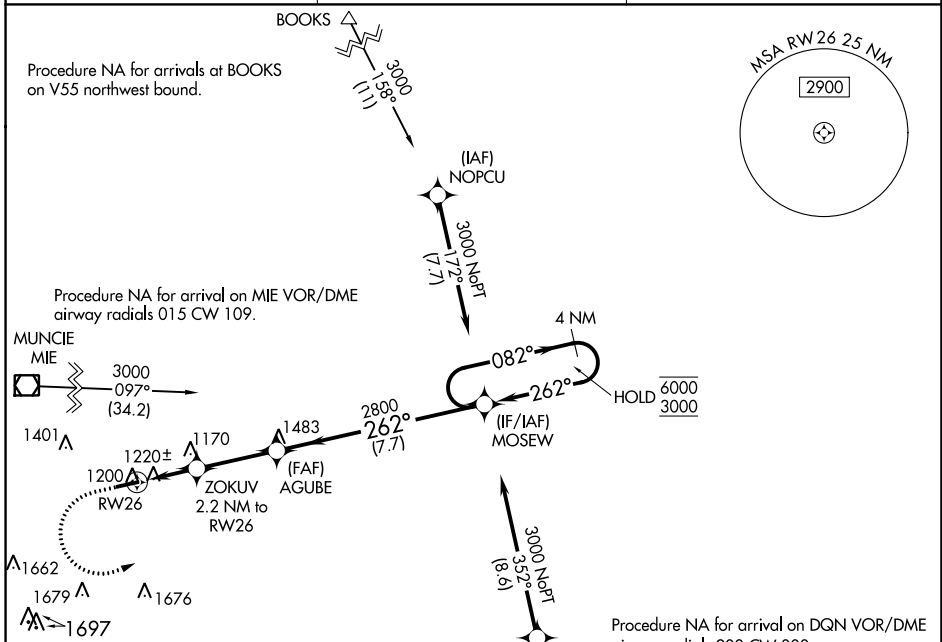
WAAS CH 78120 W26A	APP CRS 262°	Rwy Idg TDZE Apt Elev	4300 1123 1123
--	------------------------	-----------------------------	---

RNAV (GPS) RWY 26

RANDOLPH COUNTY (I22)

RNP APCH - GPS.	MISSED APPROACH: Climb to 2500 then climbing left turn to 3000 direct MOSEW and hold.
<p>Baro-VNAV NA. Use Versailles altimeter setting; when not received, use Muncie altimeter setting; increase all DA/MDA 20 feet and visibility LPV all Cats 1/8 SM.</p>	

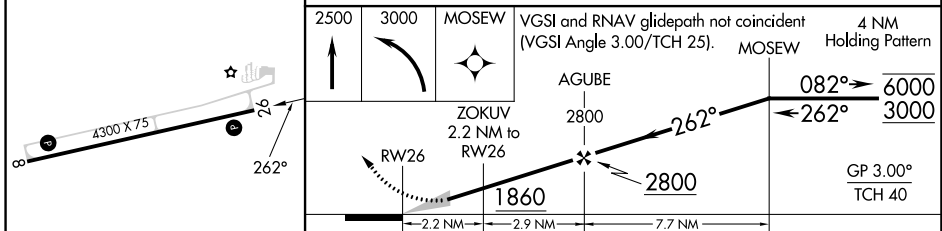
VES AWOS-3T 125.9	COLUMBUS APP CON 134.45 352.05	UNICOM 123.0 (CTAF)
-----------------------------	--	-------------------------------



EC-2, 28 NOV 2024 to 26 DEC 2024

EC-2, 28 NOV 2024 to 26 DEC 2024

ELEV 1123	TDZE 1123
-----------	-----------



CATEGORY	A	B	C	D
LPV DA		1495-1	372 (400-1)	NA
LNAV/ VNAV DA		1449-1	326 (400-1)	NA
LNAV MDA	1540-1	417 (500-1)	1540-1 3/8 417 (500-1 3/8)	NA
CIRCLING	1620-1	497 (500-1)	1820-2 697 (700-2)	NA