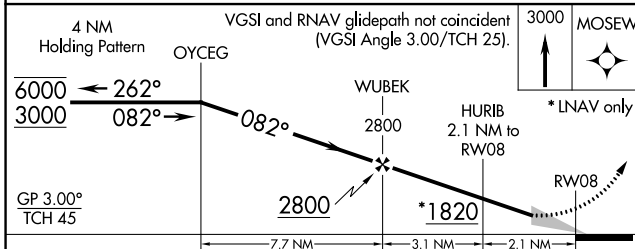
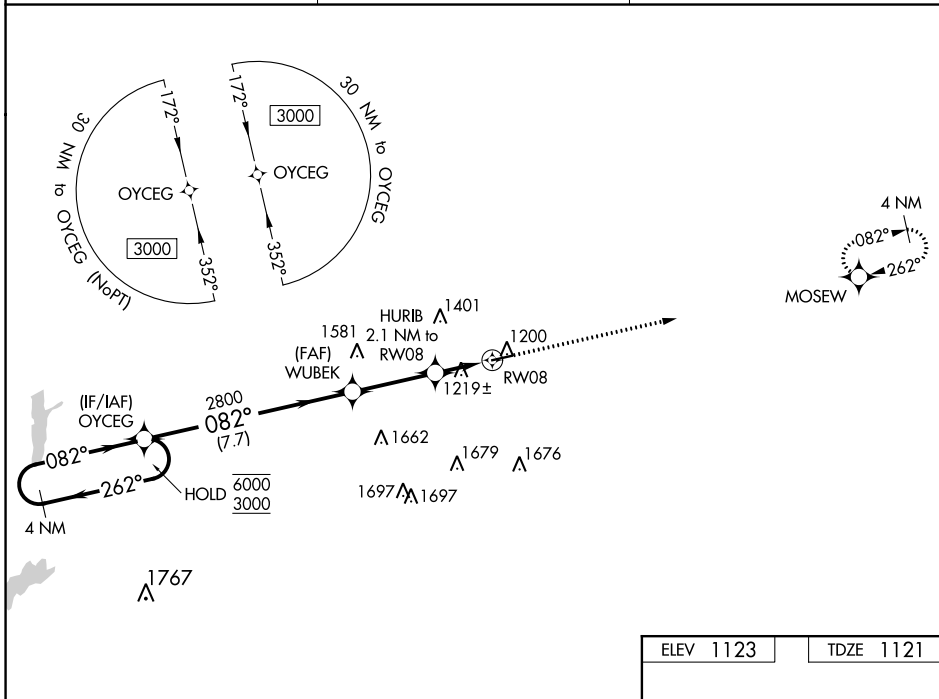


WAAS CH <b>90420</b> <b>W08A</b>	APP CRS <b>082°</b>	Rwy Idg TDZE Apt Elev	<b>4300</b> <b>1121</b> <b>1123</b>
--	------------------------	-----------------------------	---

# RNAV (GPS) RWY 8

RANDOLPH COUNTY (I22)

RNP APCH.		MISSED APPROACH: Climb to 3000 direct MOSEW and hold.
	Baro-VNAV NA.	
VES AWOS-3T <b>125.9</b>	COLUMBUS APP CON <b>134.45 352.05</b>	UNICOM <b>123.0</b> (CTAF)



ELEV 1123	TDZE 1121
-----------	-----------

CATEGORY	A	B	C	D
LPV DA	1430-7/8	309 (400-7/8)		NA
LNAV/VNAV DA	1430-7/8	309 (400-7/8)		NA
LNAV MDA	1560-1	439 (500-1)	1560-1 1/4 439 (500-1 1/4)	NA
CIRCLING	1620-1	497 (500-1)	1820-2 697 (700-2)	NA

MIRL Rwy 8-26   
REIL Rwy 8 and 26

EC-2, 28 NOV 2024 to 26 DEC 2024

EC-2, 28 NOV 2024 to 26 DEC 2024