

APP CRS	Rwy Idg	4000
174°	TDZE	247
	Apt Elev	248

RNAV (GPS) RWY 17

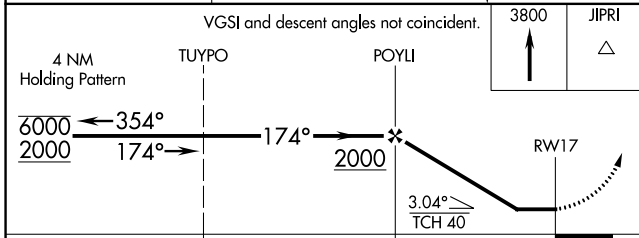
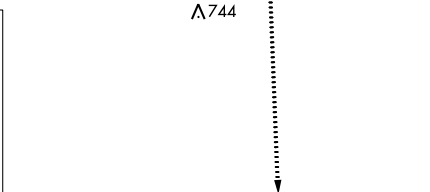
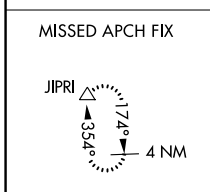
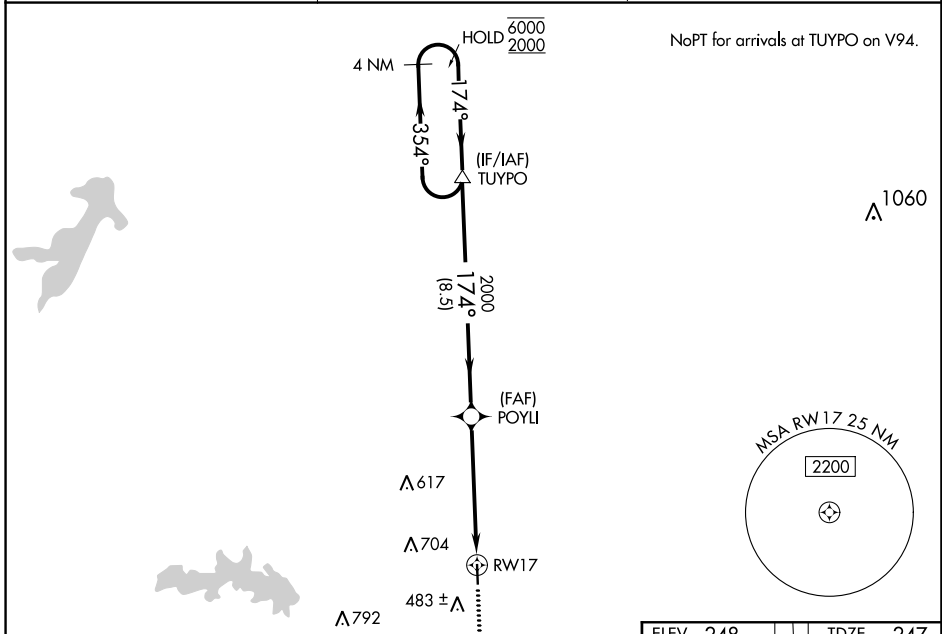
PANOLA COUNTY-SHARPE FLD (4F2)

RNP APCH-GPS.

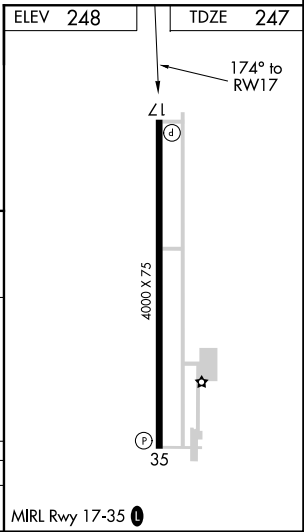
▲ Procedure NA at night. Rwy 17 helicopter visibility reduction below 1 SM NA. When local altimeter setting not received, use Longview altimeter setting.

MISSED APPROACH: Climb to 3800 direct JIPRI and hold, continue climb-in-hold to 3800.

AWOS-3PT 121.125	SHREVEPORT APP CON ★ 119.9 335.55	UNICOM 122.8 (CTAF) 0
----------------------------	---	---------------------------------



CATEGORY	A	B	C	D
LNAV MDA	760-1	513 (600-1)	760-1 3/8 513 (600-1 3/8)	NA



SC-2, 28 NOV 2024 to 26 DEC 2024

SC-2, 28 NOV 2024 to 26 DEC 2024