

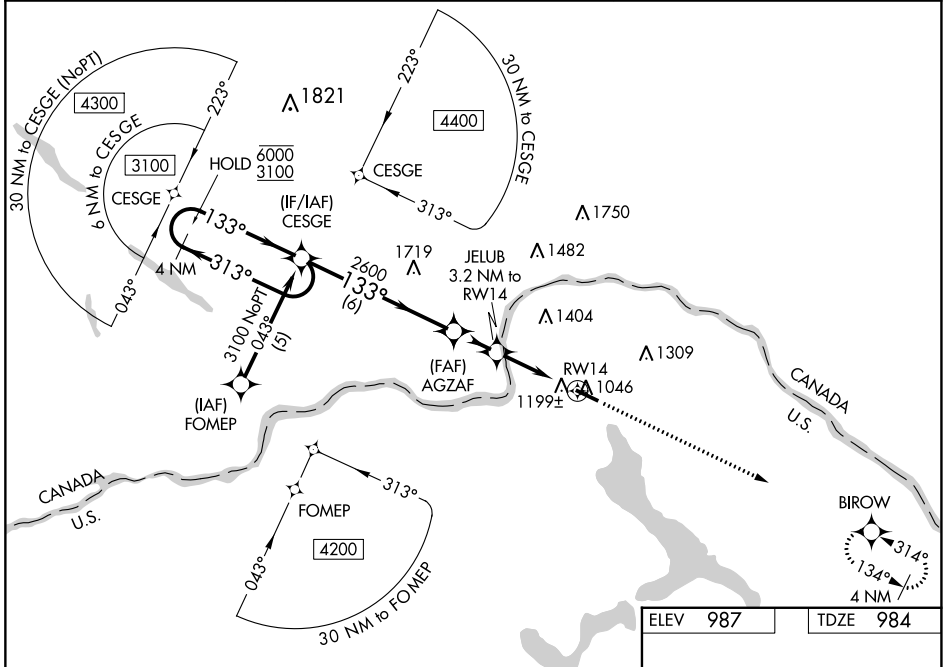
WAAS CH <b>93917</b> <b>W14A</b>	APP CRS <b>133°</b>	Rwy Idg TDZE Apt Elev	<b>4600</b> <b>984</b> <b>987</b>
--	------------------------	-----------------------------	---

# RNAV (GPS) RWY 14

NORTHERN AROOSTOOK RGNL (FVE)

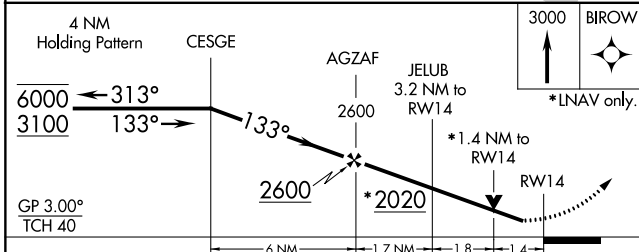
RNP APCH.	MISSED APPROACH: Climb to 3000 direct BIROW and hold.
<p><b>⚠</b> Rwy 14 helicopter visibility reduction below 3/4 SM NA. For uncompensated Baro-VNAV systems, LNAV/VNAV NA below -16°C or above 54°C.</p>	

ASOS <b>135.725</b>	BOSTON CENTER <b>124.75 239.05</b>	UNICOM <b>122.7 (CTAF) 0</b>
------------------------	---------------------------------------	---------------------------------



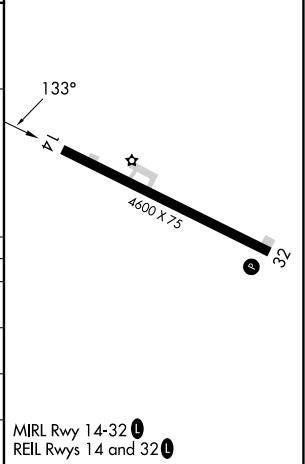
NE-1, 28 NOV 2024 to 26 DEC 2024

NE-1, 28 NOV 2024 to 26 DEC 2024



ELEV 987	TDZE 984
----------	----------

CATEGORY	A	B	C	D
LPV DA		1270-1	286 (300-1)	
LNAV/VNAV DA		1519-2	535 (600-2)	
LNAV MDA	1460-1	476 (500-1)	1460-1 1/2 476 (500-1 1/2)	1460-1 1/2 476 (500-1 1/2)
<b>C</b> CIRCLING	1560-1 573 (600-1)	1580-1 593 (600-1)	1840-2 1/2 853 (900-2 1/2)	1840-2 3/4 853 (900-2 3/4)



MIRL Rwy 14-32 0  
REIL Rws 14 and 32 0