

APP CRS	Rwy Idg	4000
052°	TDZE	990
	Apt Elev	995

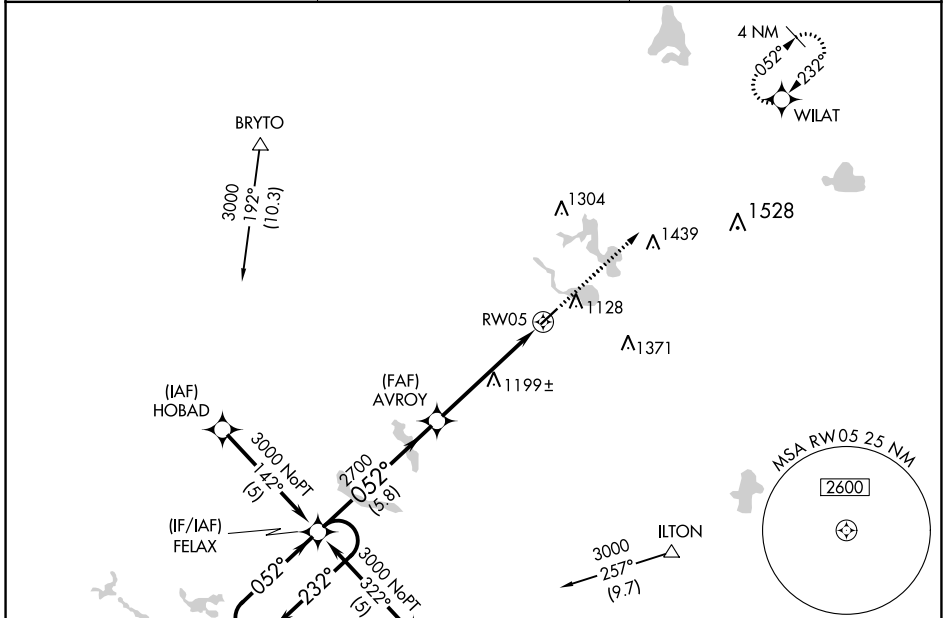
RNAV (GPS) RWY 5

TRI-STATE STEUBEN COUNTY (ANQ)

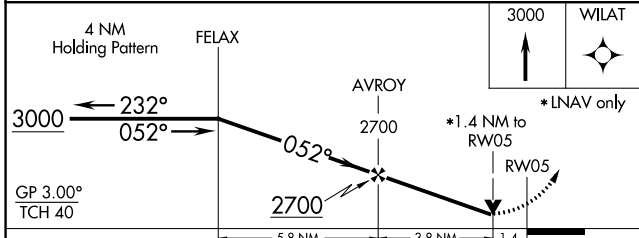
RNP APCH.
 ▼ For uncompensated Baro-VNAV systems, LNAV/VNAV NA below -16°C or above 54°C.
 ▲ NA Rwy 5 helicopter visibility reduction below ¾ SM NA.

MISSED APPROACH:
 Climb to 3000 direct
 WILAT and hold.

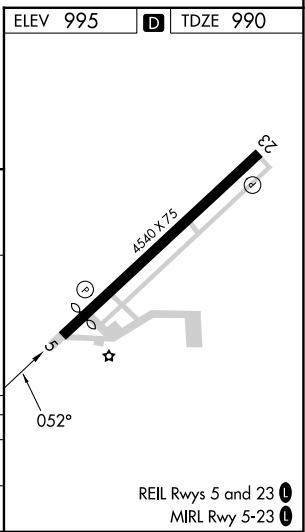
AWOS-3 118.175	FORT WAYNE APP CON 127.2 284.6 (SW/NW) 132.15 284.6 (SE/NE)	UNICOM 123.075 (CTAF) 1
--------------------------	---	--



ELEV 995	D TDZE 990
----------	-------------------



CATEGORY	A	B	C	D
LNAV/VNAV DA	1474-1¾		484 (500-1¾)	NA
LNAV MDA	1460-1	470 (500-1)	1460-1½ 470 (500-1½)	NA



REIL Rwy 5 and 23 **1**
 MIRL Rwy 5-23 **1**

EC-2, 28 NOV 2024 to 26 DEC 2024

EC-2, 28 NOV 2024 to 26 DEC 2024