

WAAS CH <b>86231</b>	APP CRS <b>156°</b>	Rwy Idg TDZE <b>1459</b>	<b>4435</b>
<b>W16A</b>		Apt Elev <b>1478</b>	

# RNAV (GPS) RWY 16

TAYLOR COUNTY (MDZ)

RNP APCH.

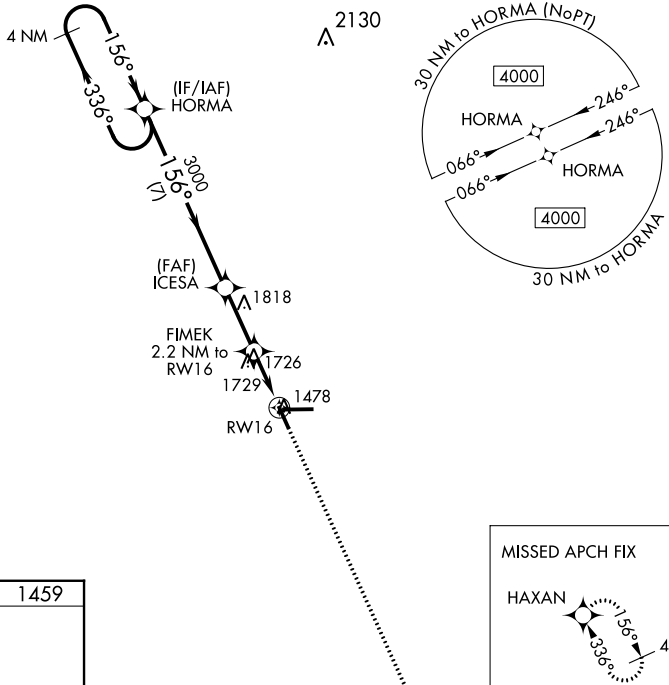
**⚠** When local altimeter setting not received, use Merrill altimeter setting and increase all MDA 100 feet and increase all Cat C/D visibility  $\frac{1}{4}$  mile. Rwy 16 helicopter visibility reduction below  $\frac{3}{4}$  SM NA. VDP NA when using Merrill altimeter setting.

**MISSED APPROACH:**  
Climb to 4000 direct HAXAN and hold.

AWOS-3  
**119.025**

MINNEAPOLIS CENTER  
**124.4 317.7**

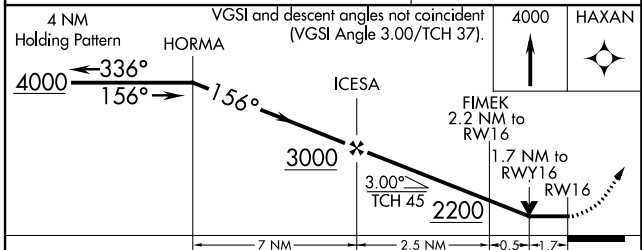
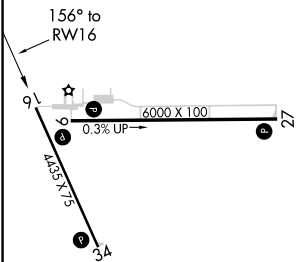
UNICOM  
**122.8 (CTAF) Ⓛ**



EC-3, 28 NOV 2024 to 26 DEC 2024

EC-3, 28 NOV 2024 to 26 DEC 2024

ELEV <b>1478</b>	TDZE <b>1459</b>
------------------	------------------



CATEGORY	A	B	C	D
LP MDA	2040-1	581 (600-1)	2040-1 $\frac{3}{4}$	581 (600-1 $\frac{3}{4}$ )
LNAV MDA	2060-1	601 (600-1)	2060-1 $\frac{3}{4}$	601 (600-1 $\frac{3}{4}$ )
CIRCLING	2060-1	582 (600-1)	2060-1 $\frac{3}{4}$ 582 (600-1 $\frac{3}{4}$ )	2180-2 $\frac{1}{4}$ 702 (800-2 $\frac{1}{4}$ )

REIL Rwys 9, 27 and 34 Ⓛ  
MIRL Rwys 9-27 and 16-34 Ⓛ