

WAAS CH 73029 W34A	APP CRS 336°	Rwy Idg TDZE Apt Elev	4435 1459 1478
--	------------------------	-----------------------------	---

RNAV (GPS) RWY 34

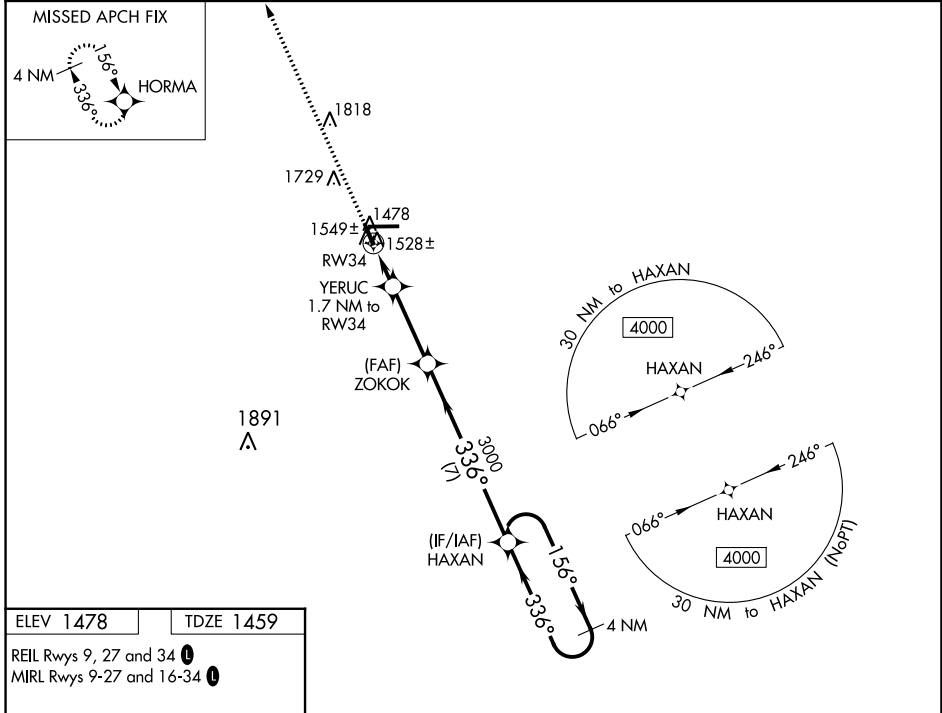
TAYLOR COUNTY (MDZ)

RNP APCH.

▼ When local altimeter setting not received, use Merrill altimeter setting: increase all MDA 100 feet and all Cat C and D visibilities ¼ SM. VDP NA when using Merrill altimeter setting.

▲ MISSED APPROACH: Climb to 4000 direct HORMA and hold.

AWOS-3 119.025	MINNEAPOLIS CENTER 124.4 317.7	UNICOM 122.8 (CTAF) 0
--------------------------	--	---------------------------------



ELEV 1478

TDZE 1459

REIL Rwy 9, 27 and 34 0

MIRL Rwy 9-27 and 16-34 0

4435 X 75

6000 X 100

0.3% UP

336° to RW34

4000	HORMA	VGSI and descent angles not coincident (VGSI Angle 3.00/TCH 27).		4 NM Holding Pattern
4000	HORMA	YERUC	ZOKOK	HAXAN
		1.7 NM to RW34		
		0.9 NM to RW34	≤3.00° TCH 45	
		2020	3000	4000
		0.9	0.8	3 NM
				7 NM
CATEGORY	A	B	C	D
LP MDA	1780-1 321 (400-1)			
LNAV MDA	1800-1 341 (400-1)			
CIRCLING	1940-1 462 (500-1)	2040-1 562 (600-1)	2040-1½ 562 (600-1½)	2180-2¼ 702 (800-2¼)

EC-3, 28 NOV 2024 to 26 DEC 2024

EC-3, 28 NOV 2024 to 26 DEC 2024