

WAAS CH 40215 W21A	APP CRS 205°	Rwy Idg 5190
		TDZE 194
		Apt Elev 198

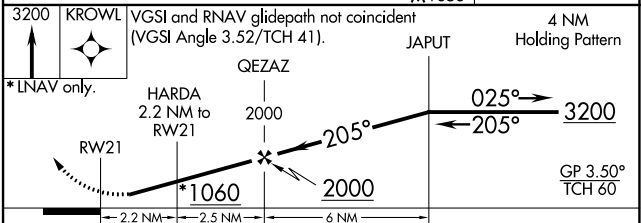
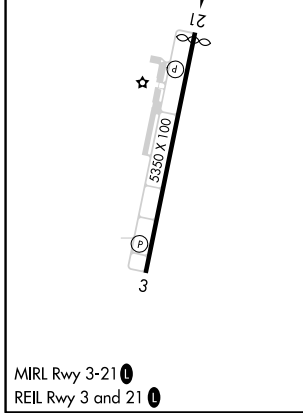
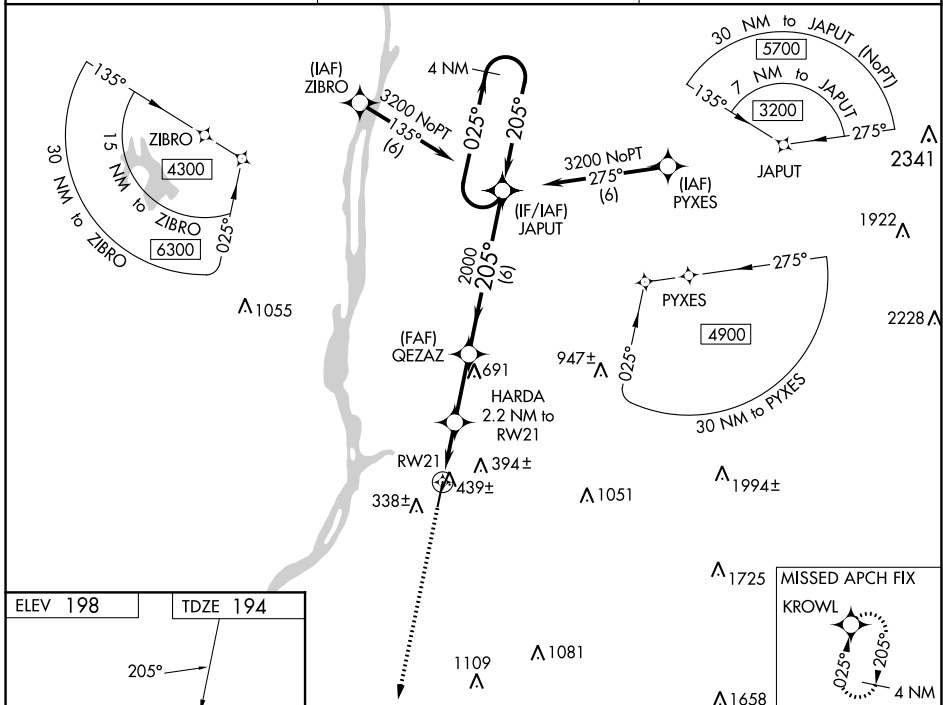
RNAV (GPS) RWY 21

COLUMBIA COUNTY (1B1)

⚠ Baro-VNAV NA when using Albany altimeter setting. For uncompensated Baro-VNAV systems, LNAV/VNAV NA below -15°C (5°F) or above 14°C (58°F). Rwy 21 helicopter visibility reduction below 1 SM NA. DME/DME RNP -0.3 NA. Straight-In Rwy 21 and Circling Rwy 21 NA at night. When local altimeter setting not received, use Albany altimeter setting and increase LPV DA to 638 feet and visibility to 1 3/8 SM all Cats, LNAV/VNAV DA to 709 feet and visibility to 1 3/8 SM all Cats; increase all MDA 80 feet, LNAV Cat C/D visibility to 1 3/4 SM, Circling Cat C to 2 1/4 SM, and Cat D to 3 SM.

MISSED APPROACH: Climb to 3200 direct KROWL and hold, continue climb-in-hold to 3200.

AWOS-3 133.525	ALBANY APP CON 132.825 307.2	UNICOM 123.05 (CTAF) 0
--------------------------	--	----------------------------------



CATEGORY	A	B	C	D
LPV DA		562-1	368 (400-1)	
LNAV/VNAV DA		633-1 1/4	439 (500-1 1/4)	
LNAV MDA	700-1	506 (600-1)	700-1 3/8	506 (600-1 3/8)
C CIRCLING	740-1	860-1	860-1 3/4	1020-2 3/4
	542 (600-1)	662 (700-1)	662 (700-1 3/4)	822 (900-2 3/4)

NE-2, 28 NOV 2024 to 26 DEC 2024

NE-2, 28 NOV 2024 to 26 DEC 2024