

WAAS CH <b>69628</b> <b>W28A</b>	APP CRS <b>280°</b>	Rwy Idg TDZE Apt Elev	<b>5003</b> <b>868</b> <b>868</b>
--	------------------------	-----------------------------	---

# RNAV (GPS) RWY 28

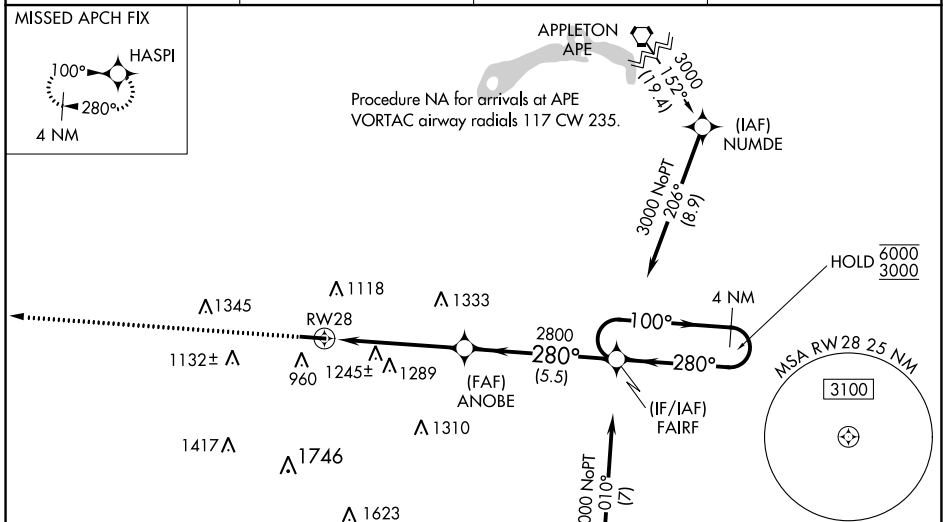
FAIRFIELD COUNTY (L.H.Q)

RNP APCH - GPS.

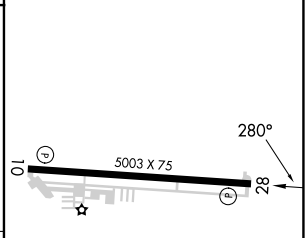
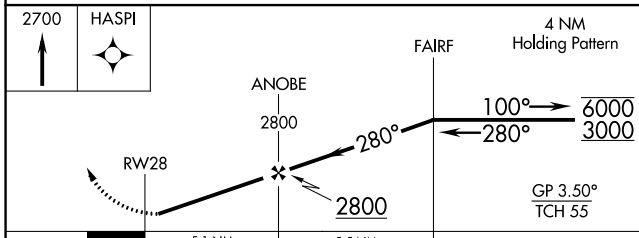
**⚠** Rwy 28 helicopter visibility reduction below 1 SM NA. For uncompensated Baro-VNAV systems, LNAV/VNAV NA below -20°C or above 54°C. Baro-VNAV NA when using Rickenbacker Intl altimeter setting. When local altimeter setting not received, use Rickenbacker Intl altimeter setting; increase LPV DA to 1411 feet and all visibilities ¼ SM; increase LNAV/VNAV DA to 1549 feet and all visibilities ¼ SM; increase all MDAs 60 feet. Straight-in Rwy 28 at night, operational VGSI required, remain on or above VGSI glidepath until threshold. When Circling Rwy 28 at night, operational VGSI required, remain on or above VGSI glidepath until threshold.

**MISSED APPROACH:**  
Climb to 2700 direct HASPI and hold.

ASOS <b>118.375</b>	COLUMBUS APP CON <b>134.0 279.6</b>	CLNC DEL <b>121.65</b>	UNICOM <b>122.725 (CTAF) 0</b>
------------------------	--	---------------------------	-----------------------------------



ELEV	868	TDZE	868
------	-----	------	-----



CATEGORY	A	B	C	D
LPV DA	1362-1 3/8	494 (500-1 3/8)		NA
LNAV/VNAV DA	1500-1 3/4	632 (700-1 3/4)		NA
LNAV MDA	1500-1	632 (700-1)		NA
CIRCLING	1500-1 632 (700-1)	1540-1 672 (700-1)		NA

REIL Rwy 10 and 28 0

MIRL Rwy 10-28 0

EC-2, 28 NOV 2024 to 26 DEC 2024

EC-2, 28 NOV 2024 to 26 DEC 2024