

WAAS CH 49131 W17A	APP CRS 166°	Rwy Idg 4010 TDZE 1522 Apt Elev 1523
--	------------------------	---

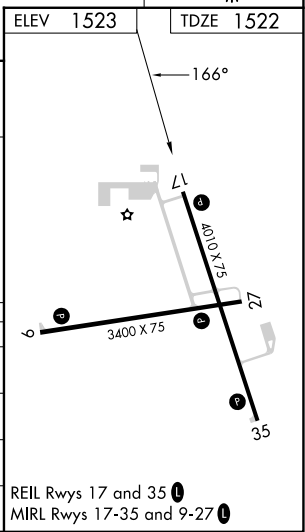
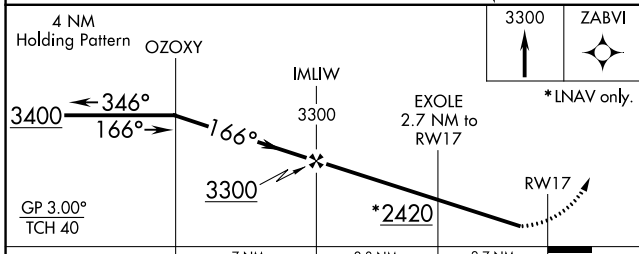
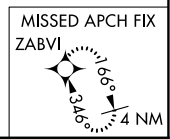
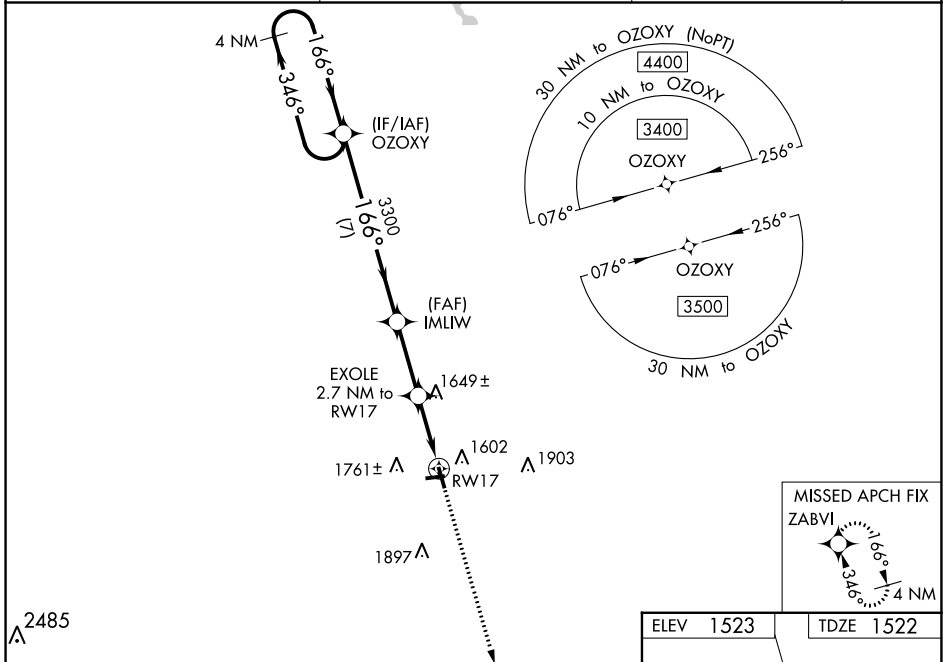
RNAV (GPS) RWY 17

LANGLADE COUNTY (AIG)

▼ Baro-VNAV NA when using Wausau Downtown altimeter setting. For uncompensated Baro-VNAV systems, LNAV/VNAV NA below -18°C (0°F) or above 54°C (130°F). Procedure NA at night.
 ▲ DME/DME RNP-0.3 NA. Helicopter visibility reduction below 1 SM NA. When local altimeter setting not received, use Wausau Downtown altimeter setting; increase all DA 105 feet all LPV visibilities ¼ mile, and all LNAV/VNAV visibilities ⅓ mile; increase all MDA 120 feet, LNAV Cat C and D visibilities ¼ mile, Circling Cat C visibility ½ mile, and Cat D visibility ¼ mile.

MISSED APPROACH:
Climb to 3300 direct ZABVI and hold.

AWOS-3 119.075	MINNEAPOLIS CENTER 124.4 317.7	UNICOM 122.8 (CTAF) 1
--------------------------	--	---------------------------------



CATEGORY	A	B	C	D
LPV DA	1772-1		250 (300-1)	
LNAV/VNAV DA	1924-1⅜		402 (400-1⅜)	
LNAV MDA	1920-1 398 (400-1)		1920-1⅛ 398 (400-1⅛)	
CIRCLING	2120-1 597 (600-1)		2120-2 597 (600-2)	

EC-3, 28 NOV 2024 to 26 DEC 2024

EC-3, 28 NOV 2024 to 26 DEC 2024