

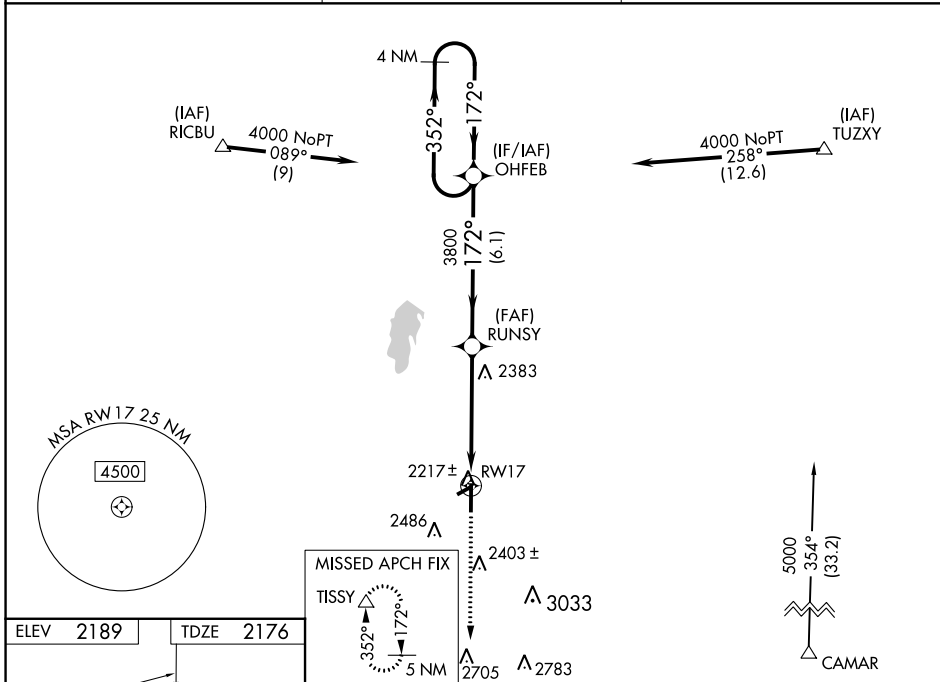
WAAS CH <b>70614</b> <b>W17A</b>	APP CRS <b>172°</b>	Rwy Idg TDZE Apt Elev	<b>5502</b> <b>2176</b> <b>2189</b>
--	------------------------	-----------------------------	---

# RNAV (GPS) RWY 17

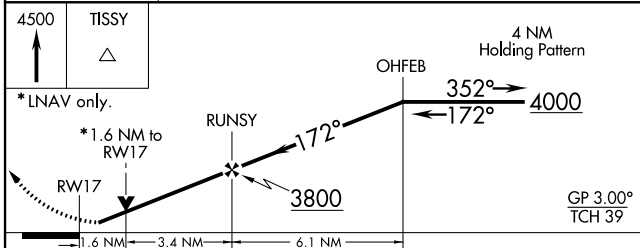
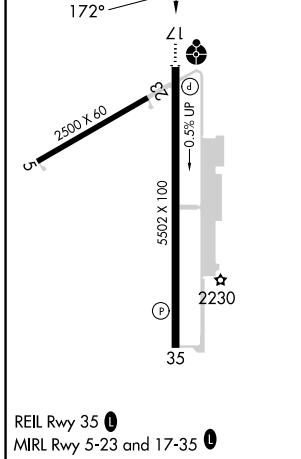
WEST WOODWARD (WWR)

RNP APCH	<p>Baro-VNAV and VDP NA when using Gage altimeter setting. For uncompensated Baro-VNAV systems, LNAV/VNAV NA below -19°C or above 54°C. When local altimeter setting not received, use Gage altimeter setting and increase all DA/MDA 40 feet. Inop table does not apply. Circling Rwy 5, 23 NA at night.</p>	ODALS	MISSED APPROACH: Climb to 4500 direct TISSY and hold.
----------	---	-------	--

AWOS-3 <b>118.425</b>	KANSAS CITY CENTER <b>126.95 379.2</b>	UNICOM <b>122.8 (CTAF)</b>
--------------------------	---	-------------------------------



ELEV	2189	TDZE	2176
------	------	------	------



CATEGORY	A	B	C	D
LPV DA	2426-1 250 (300-1)			
LNAV/VNAV DA	2572-1½ 396 (400-1½)			
LNAV MDA	2700-1	524 (600-1)	2700-1½ 524 (600-1½)	2700-1¾ 524 (600-1¾)
CIRCLING	2700-1 511 (600-1)	2860-1 671 (700-1)	2940-2¼ 751 (800-2¼)	2960-2½ 771 (800-2½)

SC-1, 28 NOV 2024 to 26 DEC 2024

SC-1, 28 NOV 2024 to 26 DEC 2024

REIL Rwy 35  
MIRL Rwy 5-23 and 17-35