

VORTAC MMB <b>115.6</b> Chan <b>103</b>	APP CRS <b>062°</b>	Rwy Idg TDZE Apt Elev <b>N/A</b> <b>N/A</b> <b>2189</b>
---	------------------------	--

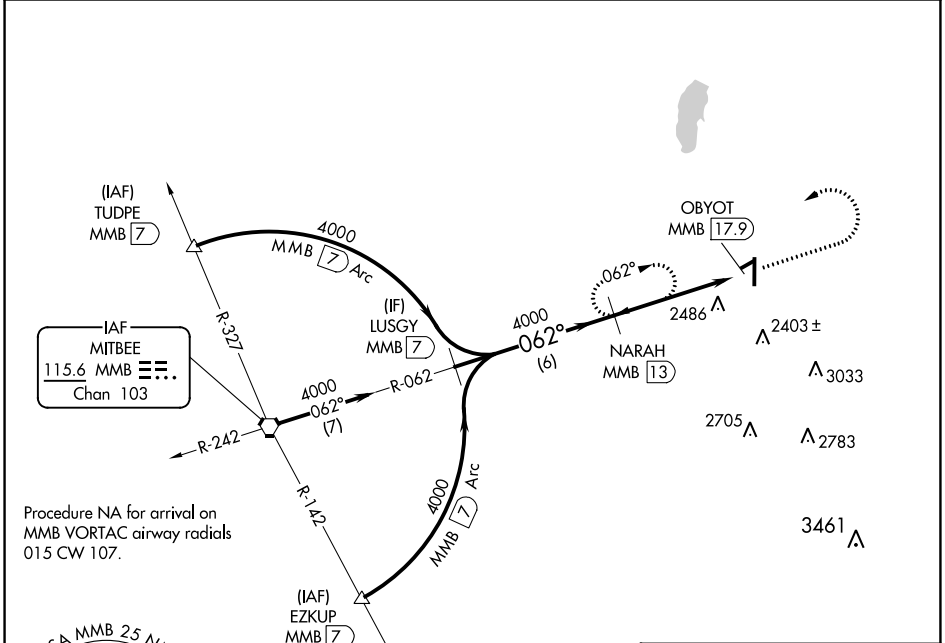
# VOR/DME-A

WEST WOODWARD (WWR)

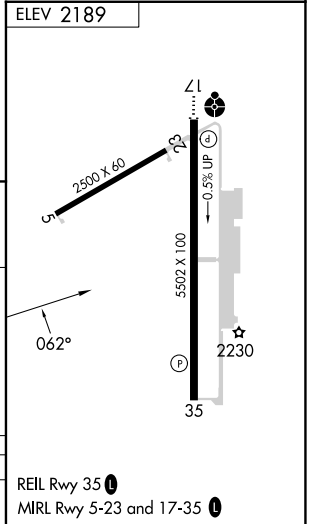
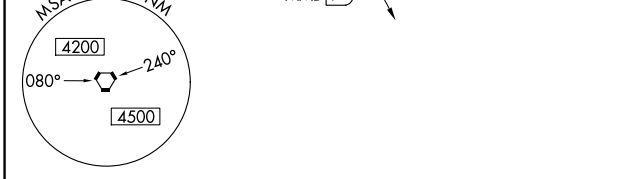
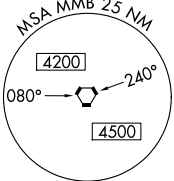
**⚠** When local altimeter setting not received, use Gage altimeter setting and increase all MDA 40 feet. Circling NA to Rwy 5 and 23.

MISSED APPROACH: Climb to 4000, then left turn via MMB VORTAC R-062 to NARAH/MMB VORTAC 13 DME and hold.

AWOS-3 <b>118.425</b>	KANSAS CITY CENTER <b>126.95 379.2</b>	UNICOM <b>122.8 (CTAF) 0</b>
--------------------------	---	---------------------------------



Procedure NA for arrival on MMB VORTAC airway radials 015 CW 107.



	LUSGY MMB 7	NARAH MMB 13	4000	MMB R-062	NARAH MMB 13
Procedure Turn NA	4000	062°	4000		OBYOT MMB 17.9
	6 NM		4.9 NM		

CATEGORY	A	B	C	D
CIRCLING	2820-1 631 (700-1)	2840-1 651 (700-1)	2940-2¼ 751 (800-2¼)	2960-2½ 771 (800-2½)

REIL Rwy 35 0  
MIRL Rwy 5-23 and 17-35 0

SC-1, 28 NOV 2024 to 26 DEC 2024

SC-1, 28 NOV 2024 to 26 DEC 2024