

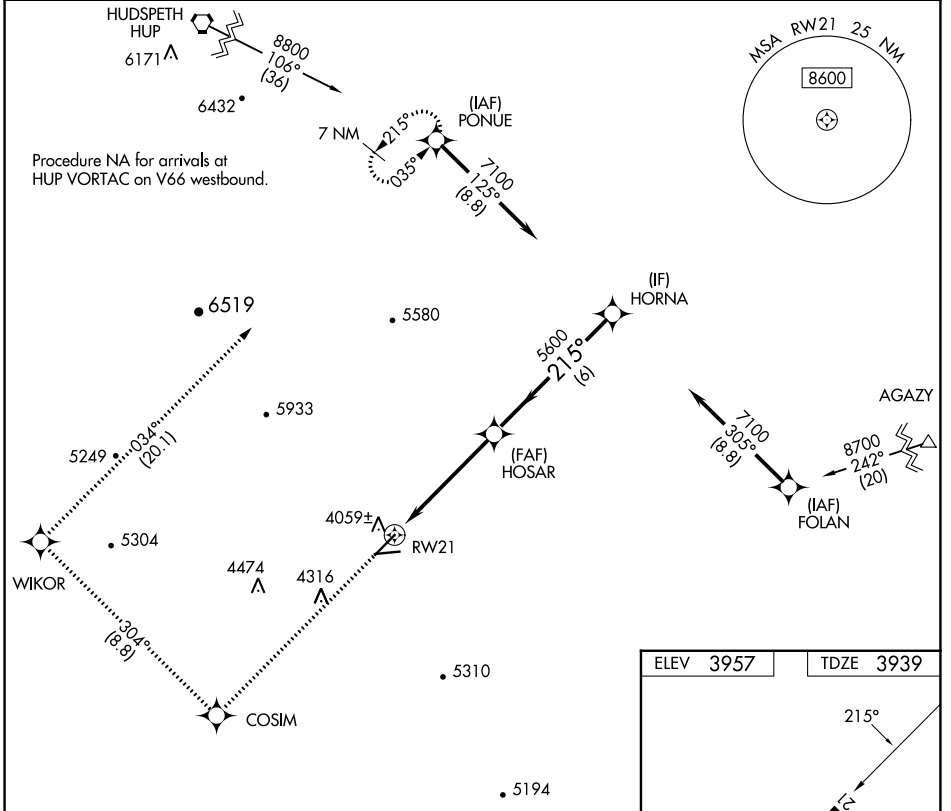
APP CRS 215°	Rwy Idg TDZE Apt Elev	6005 3939 3957
------------------------	-----------------------------	---

RNAV (GPS) RWY 21

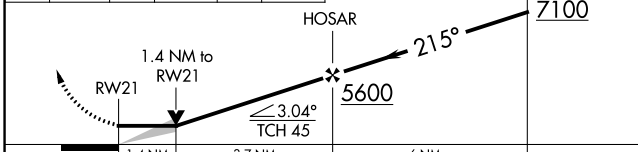
CULBERSON COUNTY (VHN)

RNP APCH.	<p>▼ Circling to Rwy 7, 25 NA at night. ▲ Circling NA south of Rwy 25 and southeast of Rwy 3.</p>	MISSED APPROACH: Climb to 8800 direct COSIM and on track 304° to WIKOR and on track 034° to PONUE and hold.
-----------	---	---

AWOS-3PT 119.925	ALBUQUERQUE CENTER 135.875 292.15	CTAF 122.9 0
----------------------------	---	------------------------



8800	COSIM	WIKOR	PONUE
↑	✧	✧	✧
	tr 304°	tr 034°	



ELEV 3957	TDZE 3939
-----------	-----------

215°

6005 X 76

5353 X 75

0.9% UP

0.8% UP

25

MIRL Rwy 3-21 and 7-25 0

CATEGORY	A	B	C	D
LNVA MDA	4400-1	461 (500-1)	4400-1 $\frac{3}{8}$	461 (500-1 $\frac{3}{8}$)
CIRCLING	4440-1 483 (500-1)	4540-1 583 (600-1)	4640-2 683 (700-2)	5580-3 1623 (1700-3)

SC-3, 28 NOV 2024 to 26 DEC 2024

SC-3, 28 NOV 2024 to 26 DEC 2024