

LURAY, VIRGINIA

AL-6229 (FAA)

24081

WAAS CH 65727 W04A	APP CRS 044°	Rwy Idg TDZE Apt Elev	3126 903 902
--	------------------------	-----------------------------	---

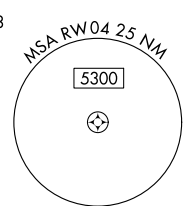
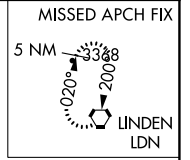
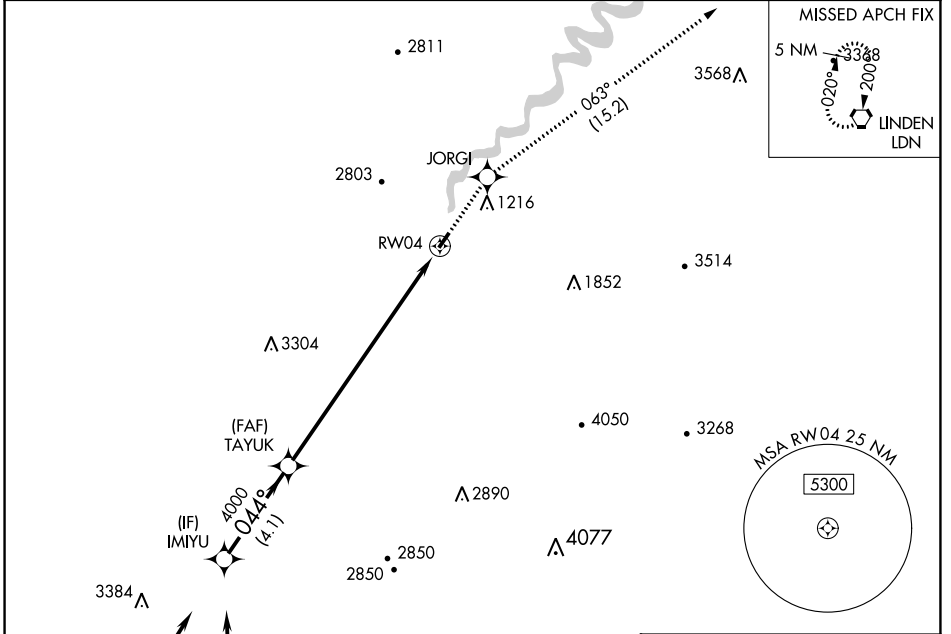
RNAV (GPS) RWY 4

LURAY CAVERNS (LUA)

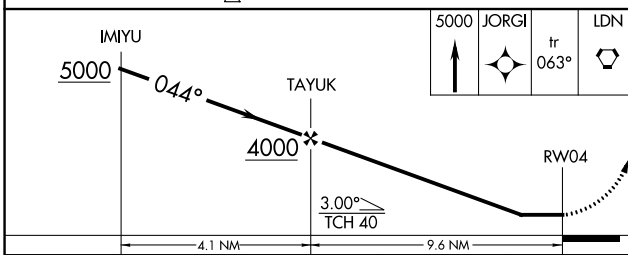
⚠ DME/DME RNP-0.3 NA. Helicopter visibility reduction below 3/4 SM NA. When local altimeter setting not received, use Staunton/Waynesboro/Harrisonburg altimeter setting and increase all MDA 120 feet.

⚠ MISSED APPROACH: Climb to 5000 direct JORGI and on track 063° to LDN VORTAC and hold.

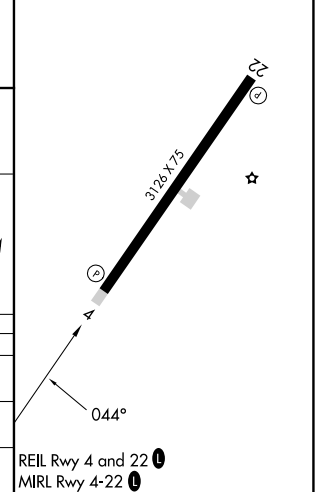
AWOS-3 118.275	WASHINGTON CENTER 133.2 282.2	UNICOM 122.8 (CTAF) 0
--------------------------	---	---------------------------------



ELEV 902	TDZE 903
----------	----------



CATEGORY	A	B	C	D
LP MDA	2180-1 1/4 1277 (1300-1 1/4)	2180-1 1/2 1277 (1300-1 1/2)	NA	NA
LNAV MDA	2240-1 1/4 1337 (1400-1 1/4)	2240-1 1/2 1337 (1400-1 1/2)	NA	NA
CIRCLING	2240-1 1/4 1338 (1400-1 1/4)	2240-1 1/2 1338 (1400-1 1/2)	NA	NA



LURAY, VIRGINIA
Orig-C 25MAR21

38°40'N-78°30'W

RNAV (GPS) RWY 4

NE-3, 28 NOV 2024 to 26 DEC 2024

NE-3, 28 NOV 2024 to 26 DEC 2024