

LURAY, VIRGINIA

AL-6229 (FAA)

24081

VORTAC LDN <b>114.3</b> Chan <b>90</b>	APP CRS <b>237°</b>	Rwy Idg TDZE Apt Elev <b>N/A</b> <b>N/A</b> <b>902</b>
--	------------------------	---

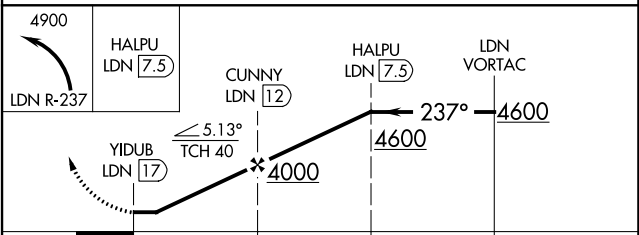
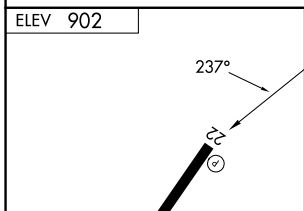
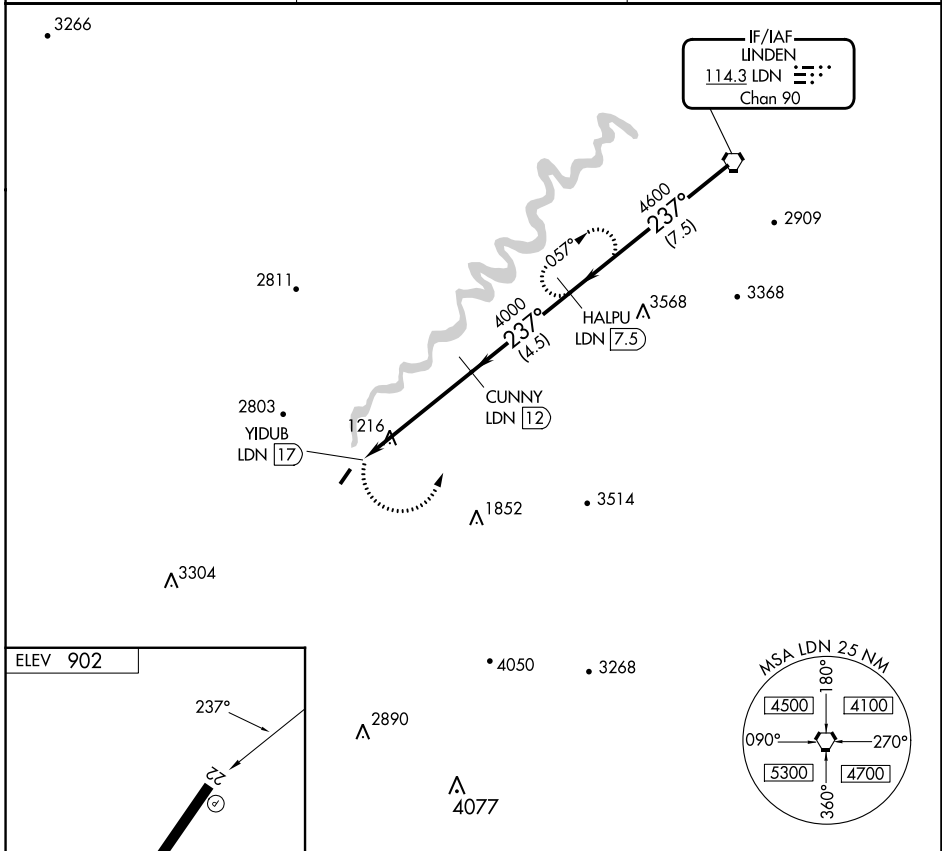
# VOR/DME-B

LURAY CAVERNS (LUA)

**⚠** Visibility reduction by helicopters NA. When local altimeter setting not received, use Staunton/Waynesboro/Harrisburg altimeter setting and increase all MDA 120 feet.

**MISSED APPROACH:** Climbing left turn to 4900 on LDN VORTAC R-237 to HALPU/LDN 7.5 DME and hold, continue climb-in-hold to 4900.

AWOS-3 <b>118.275</b>	WASHINGTON CENTER <b>133.2 282.2</b>	UNICOM <b>122.8 (CTAF) 0</b>
--------------------------	---	---------------------------------



REIL Rwy 4 and 22 0	MIRL Rwy 4-22 0	CATEGORY	A	B	C	D
		CIRCLING	2200-1¼ 1298 (1300-1¼)	2200-1½ 1298 (1300-1½)	NA	NA

LURAY, VIRGINIA  
Amdt 3B 25MAR21

38°40'N-78°30'W

LURAY CAVERNS (LUA)  
VOR/DME-B

NE-3, 28 NOV 2024 to 26 DEC 2024

NE-3, 28 NOV 2024 to 26 DEC 2024