

| | | |
|--|------------------------|---|
| WAAS CH 66035 W13A | APP CRS 129° | Rwy ldg 4003 TDZE 564 Apt Elev 585 |
|--|------------------------|---|

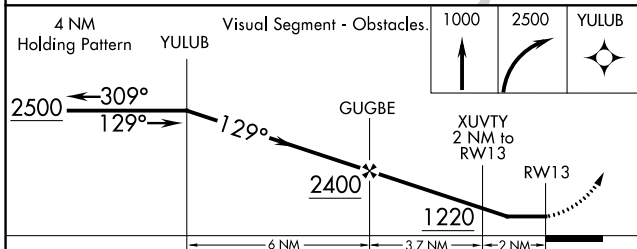
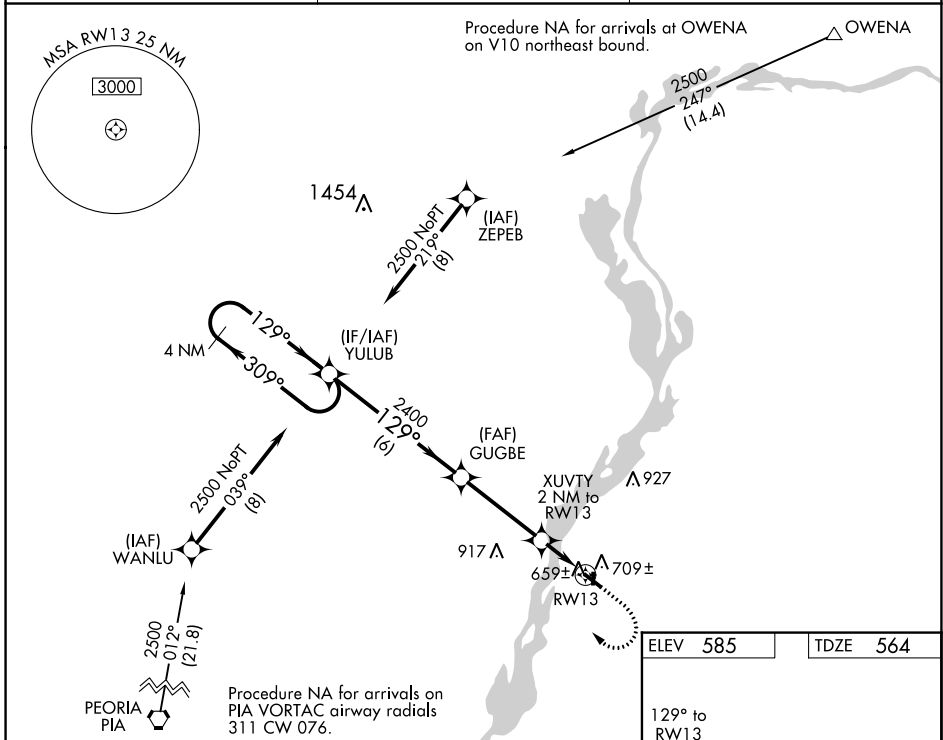
RNAV (GPS) RWY 13

MARSHALL COUNTY (C75)

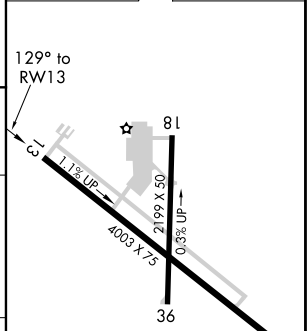
⚠ DME/DME RNP-0.3 NA. Helicopter visibility reduction below ¾ SM NA. When local altimeter setting not received, use Peru altimeter setting and increase all MDA 80 feet and increase LP and Circling Cat C visibilities ¼ mile and LNAV Cat C visibility ½ mile. Night landing: Rwy 18, 31, 36 NA.

MISSED APPROACH: Climb to 1000 then climbing right turn to 2500 direct YULUB and hold.

| | | |
|--------------------------|---|-------------------------------|
| AWOS-3 119.425 | CHICAGO CENTER 124.55 307.125 | UNICOM 122.8 (CTAF) |
|--------------------------|---|-------------------------------|



| | |
|----------|----------|
| ELEV 585 | TDZE 564 |
|----------|----------|



| CATEGORY | A | B | C | D |
|-------------------|--------|-------------|-------------------------|----|
| LP MDA | 920-1 | 356 (400-1) | 920-1½ 356 (400-1½) | NA |
| LNAV MDA | 960-1 | 396 (400-1) | 960-1¼ 396 (400-1¼) | NA |
| C CIRCLING | 1100-1 | 515 (600-1) | 1200-1¾ 615 (700-1¾) | NA |

REIL Rwy 13 **Ⓛ**
MIRL Rwy 13-31 **Ⓛ**
LIRL Rwy 18-36

EC-3, 28 NOV 2024 to 26 DEC 2024

EC-3, 28 NOV 2024 to 26 DEC 2024