

WAAS CH <b>93707</b> <b>W13A</b>	APP CRS <b>130°</b>	Rwy Idg TDZE Apt Elev	<b>5000</b> <b>2503</b> <b>2503</b>
--	------------------------	-----------------------------	---

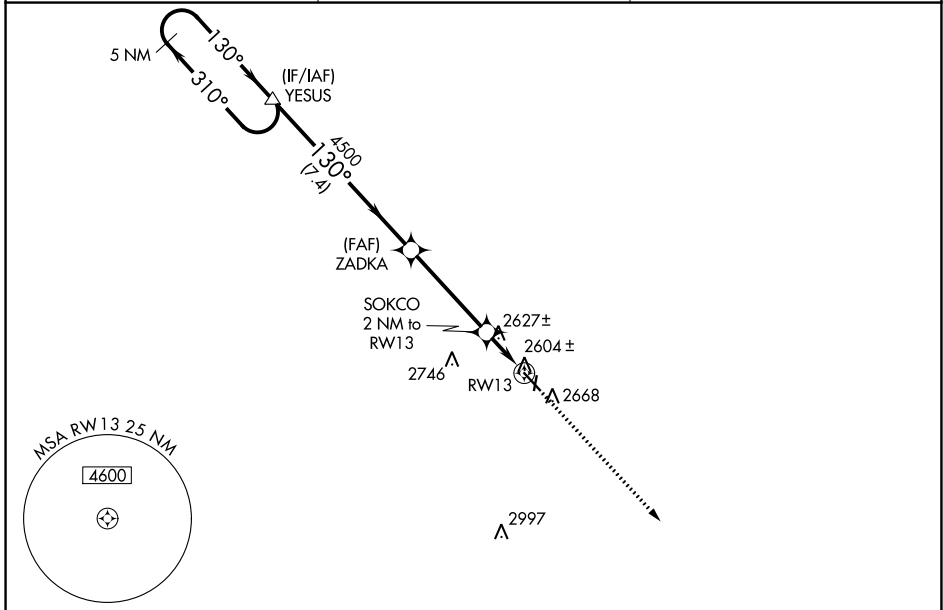
# RNAV (GPS) RWY 13

COZAD MUNI (CZD)

**▼** Circling NA to Rwy 18 and 36. Baro-VNAV NA. DME/DME RNP-0.3 NA.  
**▲ NA** Use Lexington altimeter setting; when not received, use North Platte altimeter setting and increase all DAs 79 feet and LPV and LNAV/VNAV visibility ¼ mile all Cats, increase all MDAs 80 feet and Circling Cat C visibility ¼ mile. Helicopter visibility reduction below ¾ SM NA.

MISSED APPROACH: Climb to 5500 direct TOKKU and hold.

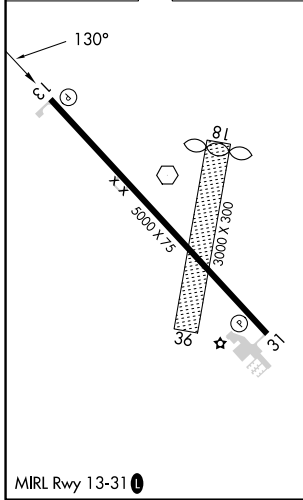
LXN AWOS-3 <b>121.025</b>	DENVER CENTER <b>132.7 226.675</b>	UNICOM <b>122.8 (CTAF) 0</b>
------------------------------	---------------------------------------	---------------------------------



NC-2, 28 NOV 2024 to 26 DEC 2024

NC-2, 28 NOV 2024 to 26 DEC 2024

ELEV <b>2503</b>	TDZE <b>2503</b>
------------------	------------------



5 NM Holding Pattern		YESUS	ZADKA		SOKCO 2 NM to RWY 13	TOKKU 5500
5000	← 310°	130° →	130°	4500	*3180	RWY 13
GP 3.00°	TCH 52	7.4 NM		4 NM	2 NM	
CATEGORY	A	B	C	D		
LPV DA	2875-1¼		372 (400-1¼)		NA	
LNAV/VNAV DA	2913-1½		410 (500-1½)		NA	
LNAV MDA	2920-1	417 (500-1)		2920-1¼	417 (500-1¼)	
CIRCLING	3080-1	577 (600-1)		3140-1¾	637 (700-1¾)	