

WAAS CH <b>58108</b> <b>W23A</b>	APP CRS <b>229°</b>	Rwy Idg TDZE <b>37</b> Apt Elev <b>40</b>	<b>6005</b>
--	------------------------	---	-------------

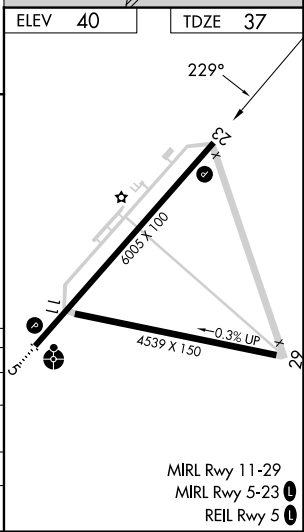
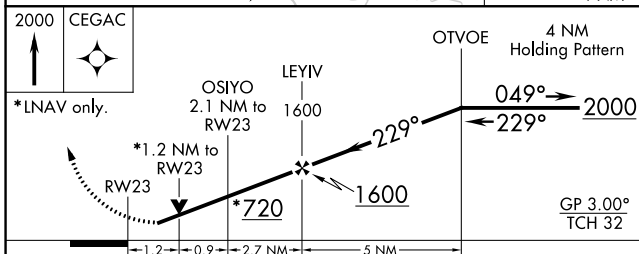
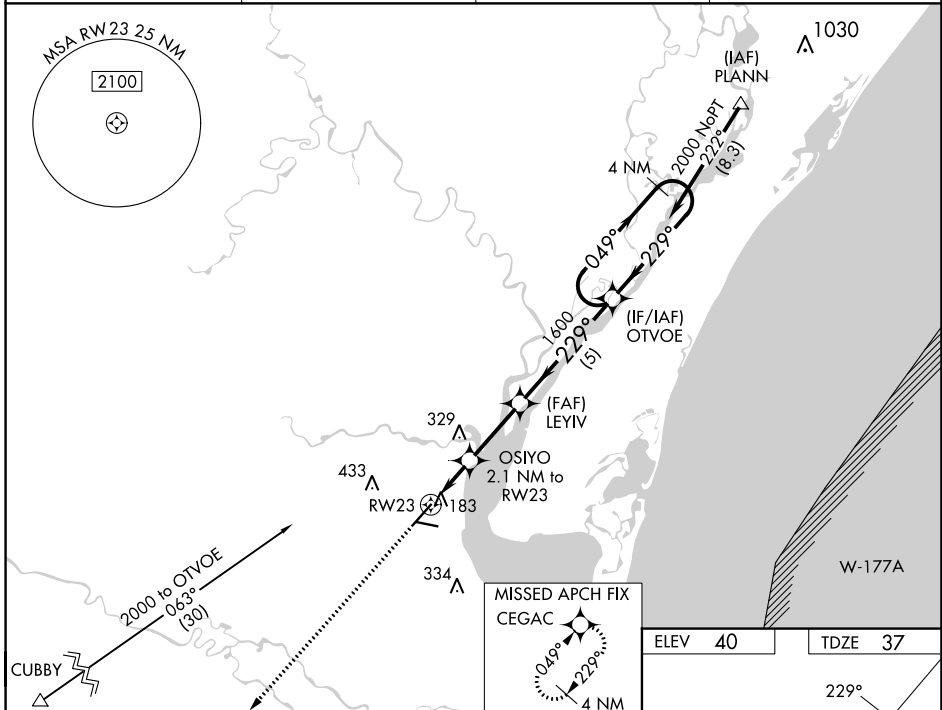
# RNAV (GPS) RWY 23

GEORGETOWN COUNTY (GGE)

RNP APCH.  
 ⚠ For uncompensated Baro-VNAV systems, LNAV/VNAV NA below -15°C or above 54°C. Circling Rwy 11, 29 NA at night. Rwy 23 helicopter visibility reduction below ¼ SM NA.

MISSED APPROACH: Climb to 2000 direct CEGAC and hold.

AWOS-3 <b>118.275</b>	MYRTLE BEACH APP CON * <b>127.4 257.95</b>	GCO <b>121.725</b>	UNICOM <b>123.0 (CTAF)</b> <b>0</b>
--------------------------	---	-----------------------	--



CATEGORY	A	B	C	D
LPV DA		323-1	286 (300-1)	
LNAV/VNAV DA		347-1½	310 (400-1½)	
LNAV MDA	440-1	403 (500-1)	440-1½	403 (500-1½)
<b>C</b> CIRCLING	500-1 460 (500-1)	520-1 480 (500-1)	740-2 700 (700-2)	740-2¼ 700 (700-2¼)

MIRL Rwy 11-29  
MIRL Rwy 5-23 **0**  
REIL Rwy 5 **0**

SE-2, 28 NOV 2024 to 26 DEC 2024

SE-2, 28 NOV 2024 to 26 DEC 2024