

| | | | |
|--|------------------------|---|---|
| WAAS CH 61233 W29A | APP CRS 289° | Rwy Idg TDZE 1167 Apt Elev 1174 | 3500 1167 1174 |
|--|------------------------|---|---|

RNAV (GPS) RWY 29

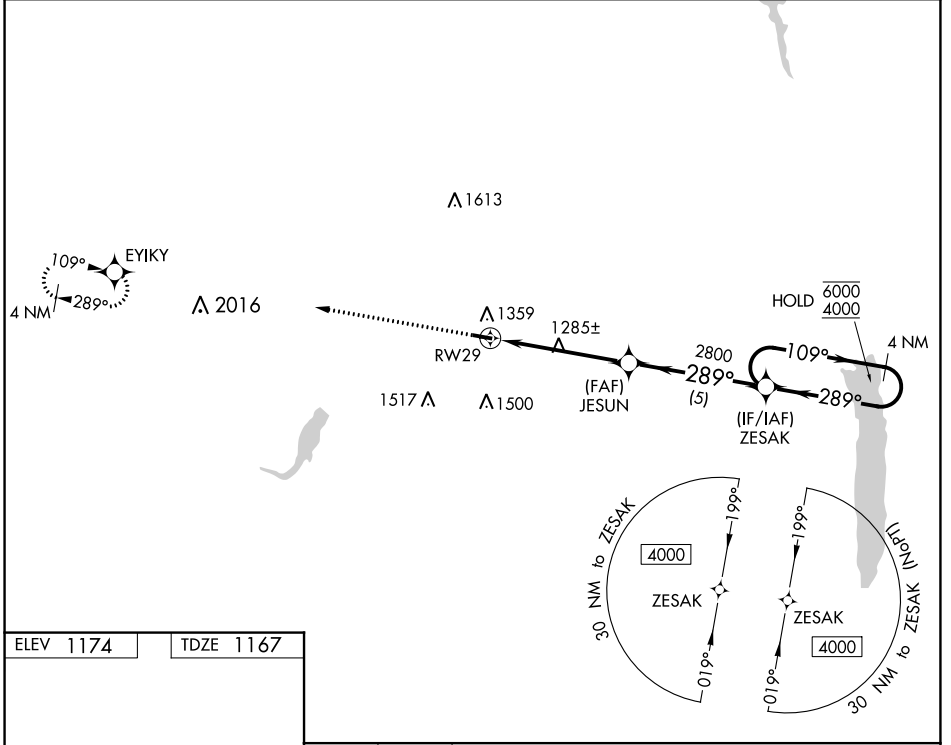
GEAUGA COUNTY (7G8)

RNP APCH - GPS.

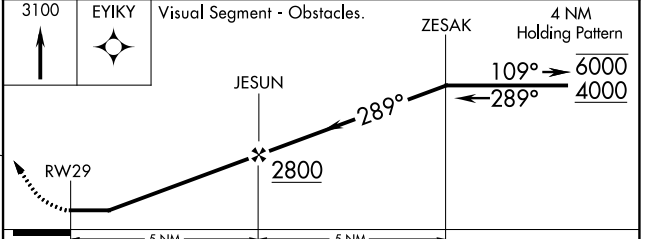
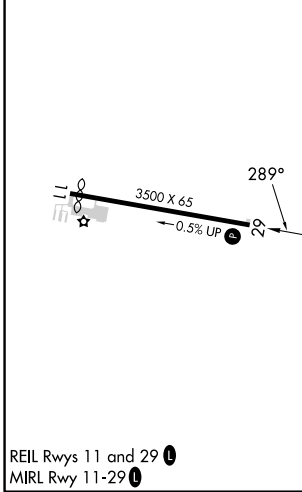
NA Circling Rwy 11 NA at night. Rwy 29 helicopter visibility reduction below 3/4 SM NA. Use Youngstown/Warren altimeter setting; when not received, use Cuyahoga County altimeter setting and increase all MDA's 40 feet and increase Circling Cat C visibility 1/4 SM.

MISSED APPROACH: Climb to 3100 direct EYIKY and hold.

| | | |
|---------------------------|--|---------------------------------|
| YNG ASOS 123.75 | CLEVELAND APP CON 125.35 346.325 | UNICOM 123.0 (CTAF) 1 |
|---------------------------|--|---------------------------------|



| | |
|------------------|------------------|
| ELEV 1174 | TDZE 1167 |
|------------------|------------------|



| CATEGORY | A | B | C | D |
|-------------------|--------|-------------|-------------------------------|----|
| LP MDA | 1620-1 | 453 (500-1) | 1620-1 3/8 453 (500-1 3/8) | NA |
| LNAV MDA | 1640-1 | 473 (500-1) | 1640-1 3/8 473 (500-1 3/8) | NA |
| C CIRCLING | 1760-1 | 586 (600-1) | 1900-2 726 (800-2) | NA |

REIL Rwy 11 and 29 **1**
MIRL Rwy 11-29 **1**

EC-2, 28 NOV 2024 to 26 DEC 2024

EC-2, 28 NOV 2024 to 26 DEC 2024