

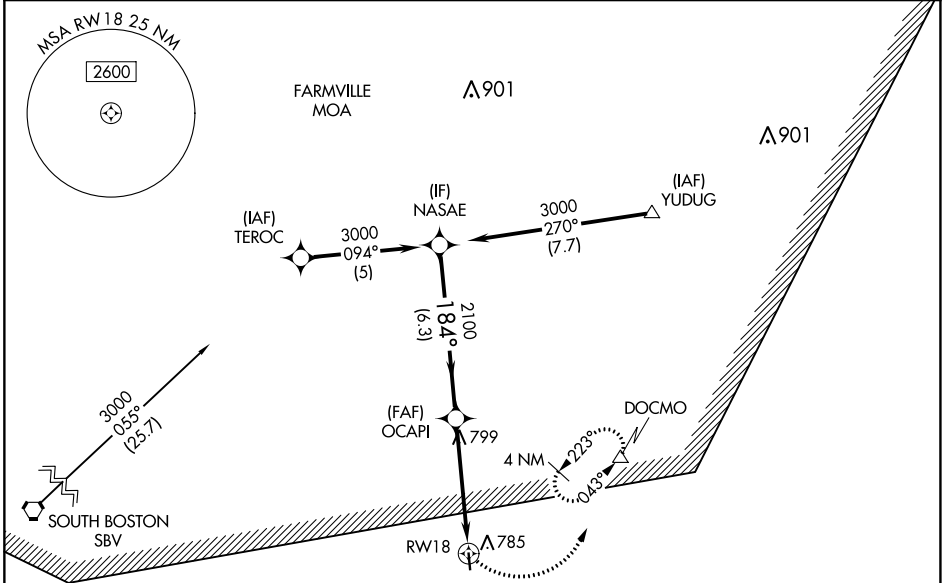
APP CRS	Rwy Idg	<b>3400</b>
<b>184°</b>	TDZE	<b>503</b>
	Apt Elev	<b>503</b>

# RNAV (GPS) RWY 18

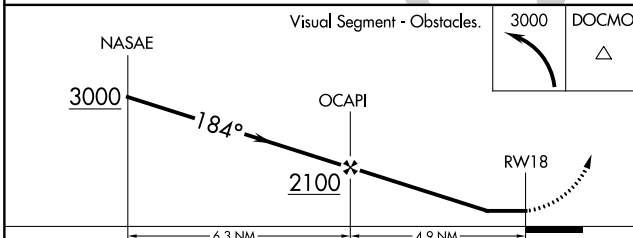
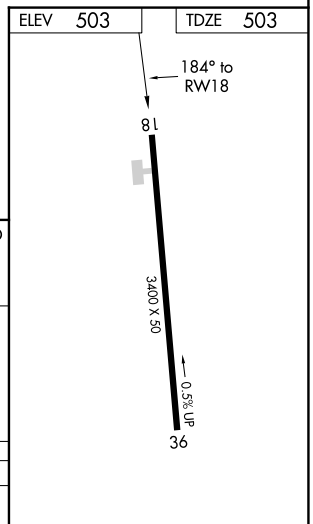
CHASE CITY MUNI (CXE)

RNP APCH - GPS.		MISSED APPROACH: Climbing left turn to 3000 direct DOCMO and hold, continue climb-in-hold to 3000.
	Procedure NA at night. Rwy 18 helicopter visibility reduction below 1 SM NA.	

AWOS-3 <b>121.225</b>	WASHINGTON CENTER <b>118.75 377.1</b>	CTAF <b>122.9</b>
--------------------------	--	----------------------



Procedure NA for arrival on SBV VORTAC airway radials 032 CW 086.



CATEGORY	A	B	C	D
LNAV MDA	1520-3	1017 (1100-3)	NA	

NE-3, 28 NOV 2024 to 26 DEC 2024

NE-3, 28 NOV 2024 to 26 DEC 2024