

APP CRS **087°**
 Rwy Idg **3002**
 TDZE **146**
 Apt Elev **146**

RNAV (GPS) RWY 9

DAVID G JOYCE (ØR5)

RNP APCH - GPS.

⚠ Procedure NA at night. Rwy 9 helicopter visibility reduction below 1 SM NA. Use Alexandria Intl altimeter setting, when not received use Esler Rgnl altimeter setting.

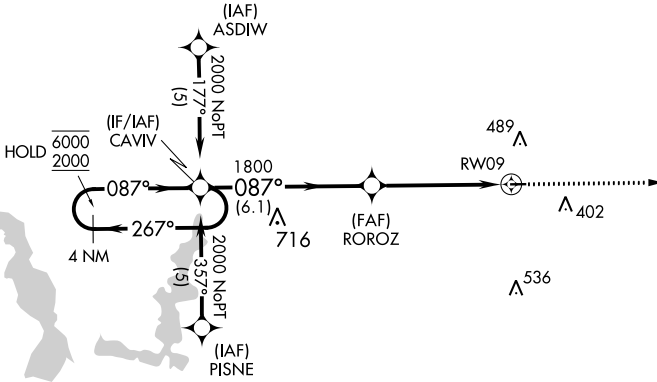
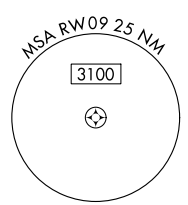
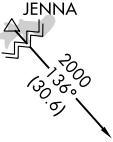
MISSED APPROACH: Climb to 2000 direct XVOVOY and hold.

AEX ASOS
123.975

POLK APP CON
125.4 302.2

UNICOM
122.7 (CTAF) 0

JENNA
 Procedure NA for arrivals at JENNA on V94 westbound.



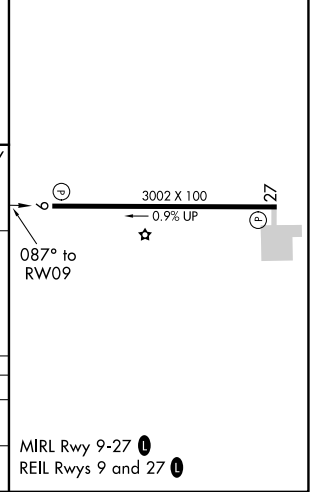
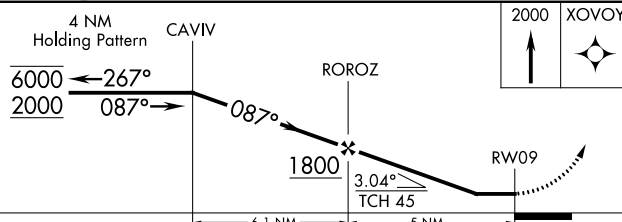
SC-4, 28 NOV 2024 to 26 DEC 2024

SC-4, 28 NOV 2024 to 26 DEC 2024

NUBOY
 Procedure NA for arrivals at NUBOY on V114-566 southeast bound.



ELEV **146** | TDZE **146**



CATEGORY	A	B	C	D
LNAV MDA	780-1	634 (700-1)		NA
C CIRCLING	780-1 634 (700-1)	900-1 754 (800-1)		NA

MIRL Rwy 9-27 **0**
 REIL Rwy 9 and 27 **0**