

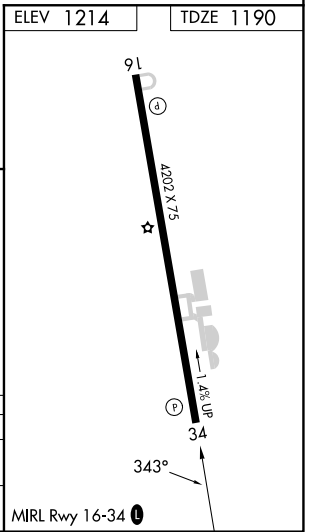
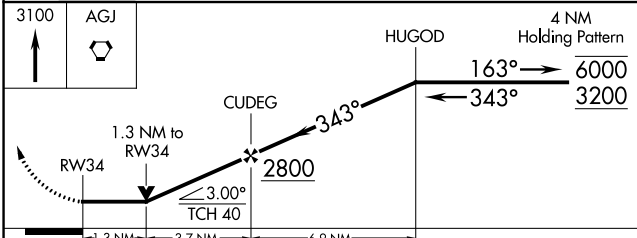
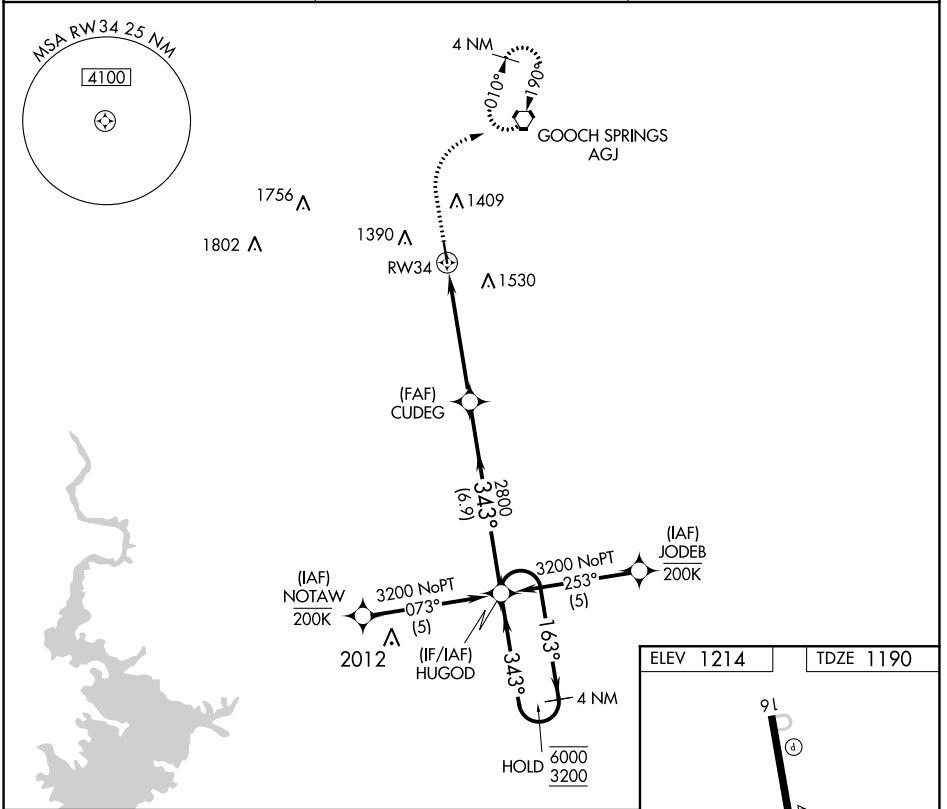
APP CRS <b>343°</b>	Rwy Idg TDZE Apt Elev	<b>4202</b> <b>1190</b> <b>1214</b>
------------------------	-----------------------------	---

# RNAV (GPS) RWY 34

LAMPASAS (LZZ)

RNP APCH - GPS.	MISSED APPROACH: Climb to 3100 direct AGJ VORTAC and hold, continue climb-in-hold to 3100.
<p>▼ Rwy 34 helicopter visibility reduction below 3/4 SM NA.</p> <p>▲ Circling Rwy 16 NA at night.</p>	

AWOS-3 <b>119.075</b>	GRAY APP CON <b>120.075 323.15</b>	UNICOM <b>122.8 (CTAF) 0</b>
--------------------------	---------------------------------------	---------------------------------



CATEGORY	A	B	C	D
LNAV MDA	1620-1	430 (500-1)	1620-1¼ 430 (500-1¼)	NA
CIRCLING	1760-1 546 (600-1)	1880-1 666 (700-1)	1880-1¾ 666 (700-1¾)	NA

SC-3, 28 NOV 2024 to 26 DEC 2024

SC-3, 28 NOV 2024 to 26 DEC 2024