

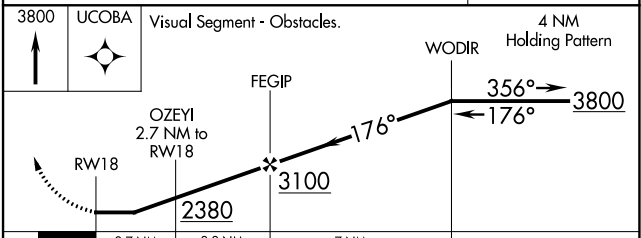
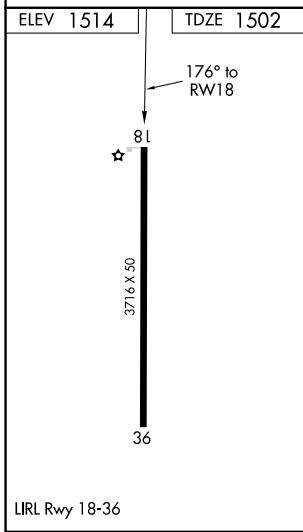
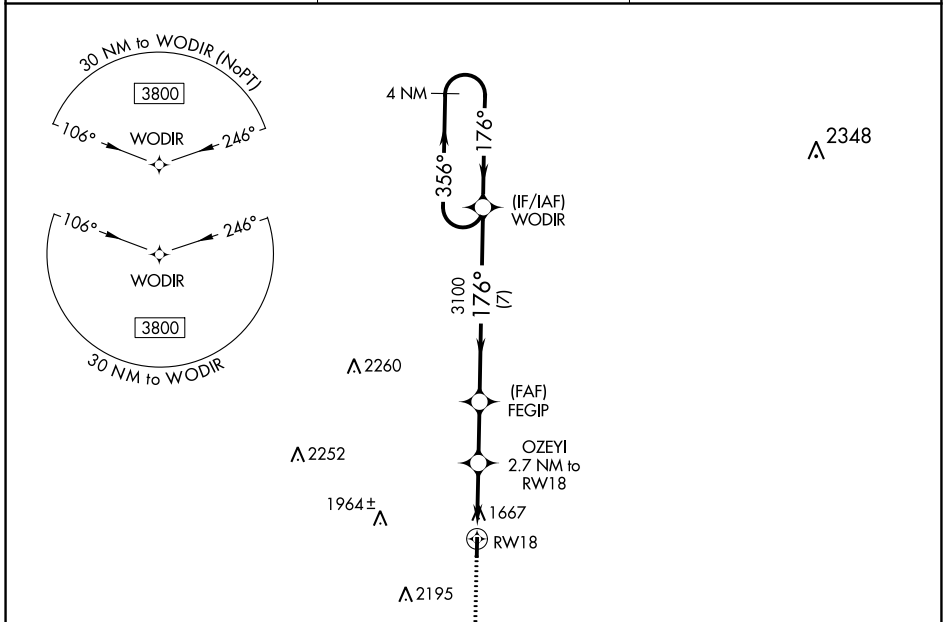
APP CRS	Rwy Idg	<b>3716</b>
<b>176°</b>	TDZE	<b>1502</b>
	Apt Elev	<b>1514</b>

# RNAV (GPS) RWY 18

MASON COUNTY (T92)

<p><b>▼</b> Rwy 18/36 helicopter visibility reduction below 1 SM NA. DME/DME RNP-0.3 NA. Procedure NA at night.</p> <p><b>▲</b> NA Use Brady altimeter setting; when not received, use Llano altimeter setting and increase all MDAs 20 feet.</p>	<p>MISSED APPROACH: Climb to 3800 direct UCOBA and hold.</p>
---	--

<p>BBD AWOS-3 <b>118.375</b></p>	<p>HOUSTON CENTER <b>132.35 317.5</b></p>	<p>CTAF <b>122.9</b></p>
--------------------------------------	---	------------------------------



CATEGORY	A	B	C	D
LNNAV MDA	2080-1	578 (600-1)	NA	
<b>☑</b> CIRCLING	2140-1	626 (700-1)	NA	

SC-3, 28 NOV 2024 to 26 DEC 2024

SC-3, 28 NOV 2024 to 26 DEC 2024