

WAAS CH <b>58040</b> <b>W07A</b>	APP CRS <b>071°</b>	Rwy Idg TDZE Apt Elev	<b>3504</b> <b>1255</b> <b>1255</b>
--	------------------------	-----------------------------	---

# RNAV (GPS) RWY 7

HAWKINS COUNTY (RVN)

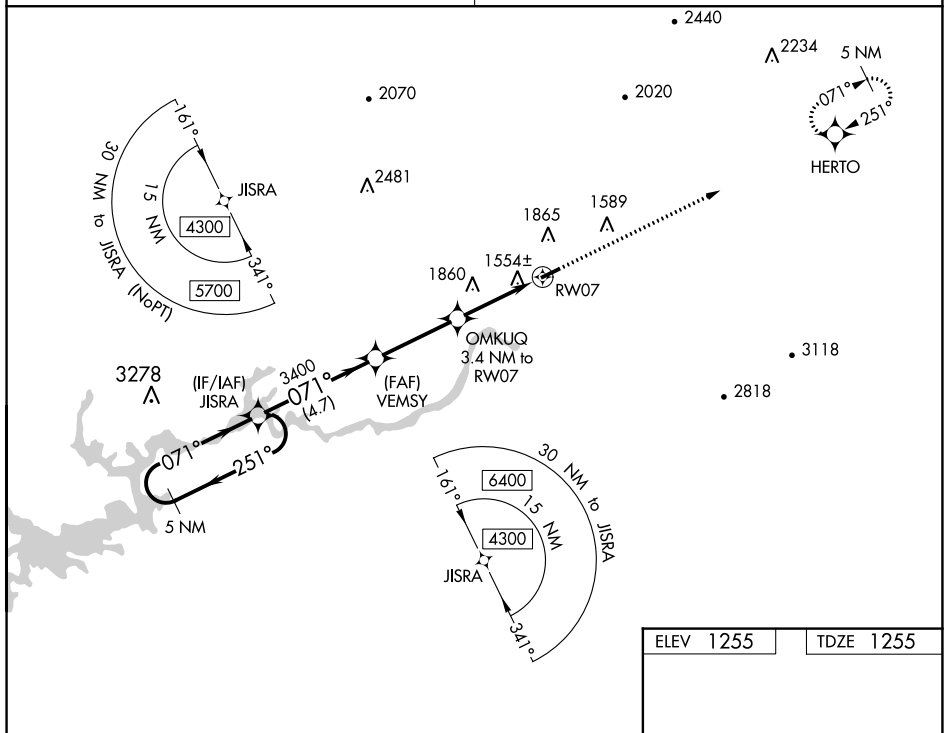
RNP APCH - GPS.

**NA** Procedure NA at night. Obtain local altimeter setting on CTAF; when not received, use Tri-Cities Rgnl altimeter setting and increase all MDA 120 feet, increase LP Cat C visibility ¼ SM, increase LNAV Cat A and Circling Cat B visibility ¼ SM. Rwy 7, 25 helicopter visibility reduction below 1 SM NA.

**MISSED APPROACH:**  
Climb to 4600 direct HERTO and hold, continue climb-in-hold to 4600.

TRI CITY APP CON ★  
**128.05 317.5**

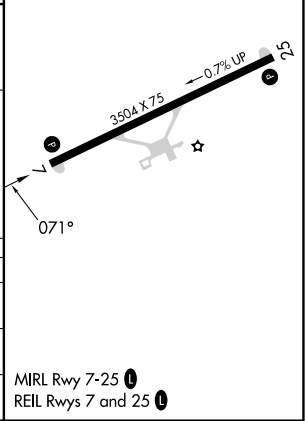
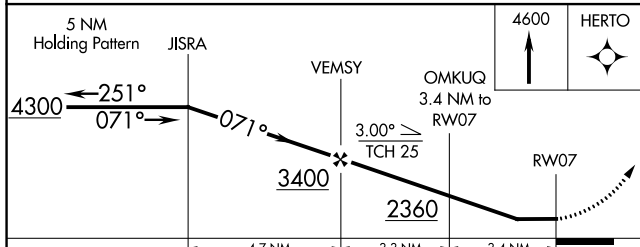
UNICOM  
**122.8 (CTAF)**



SE-1, 28 NOV 2024 to 26 DEC 2024

SE-1, 28 NOV 2024 to 26 DEC 2024

ELEV 1255	TDZE 1255
-----------	-----------



CATEGORY	A	B	C	D
LP MDA	1860-1	605 (700-1)	1860-1¾ 605 (700-1¾)	NA
LNAV MDA	2040-1 785 (800-1)	2040-1¼ 785 (800-1¼)	2040-2½ 785 (800-2½)	NA
CIRCLING	2180-1¼	925 (1000-1¼)	2320-3 1065 (1100-3)	NA