

WAAS CH <b>90538</b> <b>W31A</b>	APP CRS <b>316°</b>	Rwy Idg <b>3401</b> TDZE <b>754</b> Apt Elev <b>754</b>
--	------------------------	---

# RNAV (GPS) RWY 31

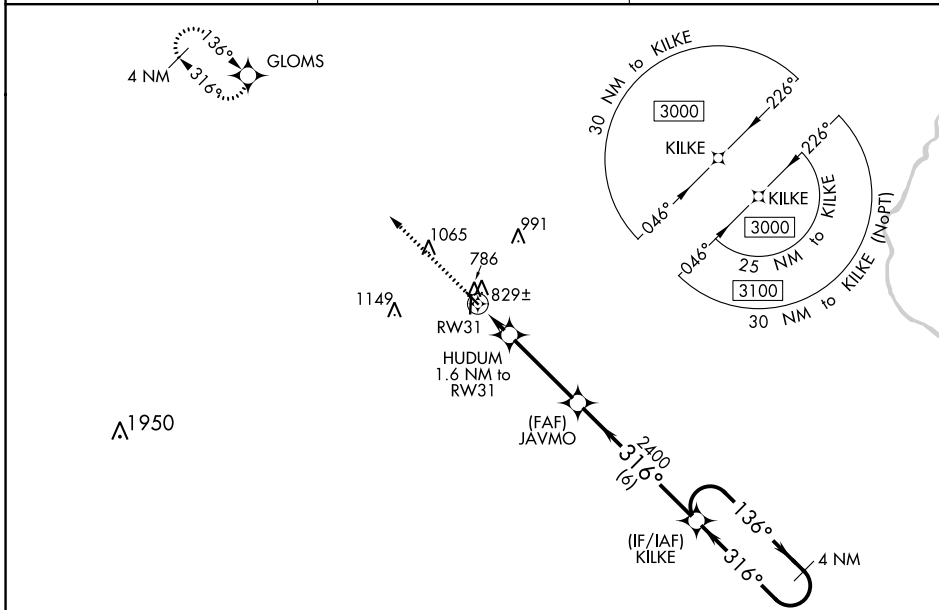
WASHINGTON MUNI (A WG)

RNP APCH.

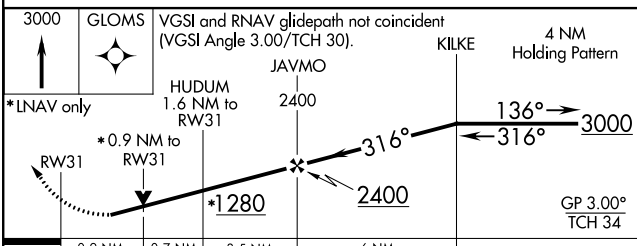
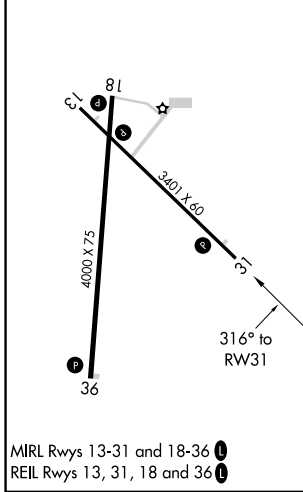
▼ For uncompensated Baro-VNAV systems, LNAV/VNAV NA below -6°C (22°F) or above 54°C (130°F).  
 ▲ Rwy 31 helicopter visibility reduction below ¼ SM NA. Baro-VNAV and VDP NA when using Iowa City altimeter setting. When local altimeter setting not received, use Iowa City altimeter setting: increase LPV and LNAV/VNAV DA to 1066 feet; increase all MDAs 80 feet and visibility LNAV Cat C ¼ SM and Circling Cat C ¼ SM.

MISSED APPROACH:  
Climb to 3000 direct GLOMS and hold.

AWOS-3 <b>127.825</b>	CHICAGO CENTER <b>135.6 370.95</b>	UNICOM <b>122.7 (CTAF) 0</b>
--------------------------	---------------------------------------	---------------------------------



ELEV 754	TDZE 754
----------	----------



CATEGORY	A	B	C	D
LPV DA		1004-1	250 (300-1)	NA
LNAV/VNAV DA		1004-1	250 (300-1)	NA
LNAV MDA		1080-1	326 (400-1)	NA
<input checked="" type="checkbox"/> CIRCLING	1200-1 446 (500-1)	1260-1 506 (600-1)	1500-2¼ 746 (800-2¼)	NA

NC-3, 28 NOV 2024 to 26 DEC 2024

NC-3, 28 NOV 2024 to 26 DEC 2024