

WAAS CH 90416 W36A	APP CRS 004°	Rwy ldg 4000 TDZE 752 Apt Elev 754
----------------------------------------	------------------------	---------------------------------------------------------------

RNAV (GPS) RWY 36

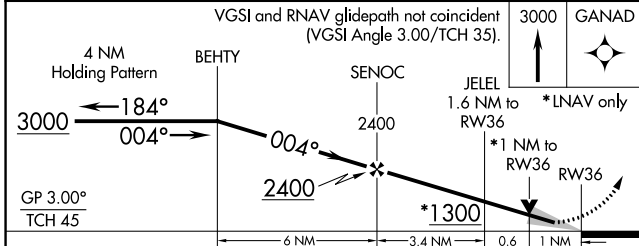
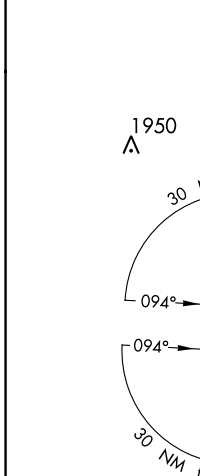
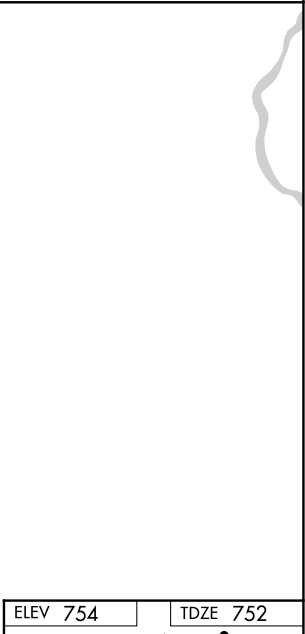
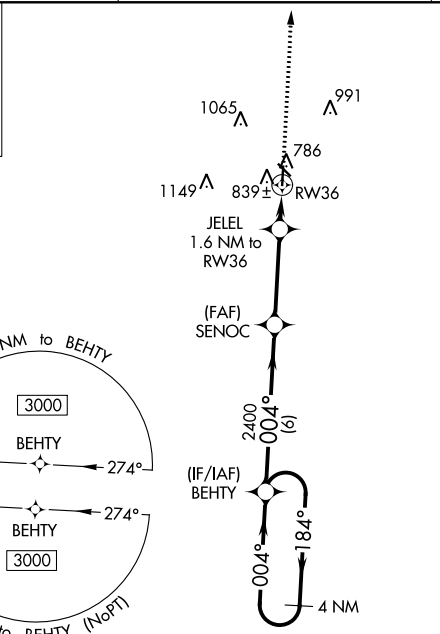
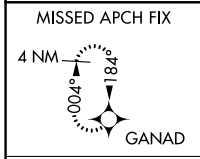
WASHINGTON MUNI (A WG)

RNP APCH.

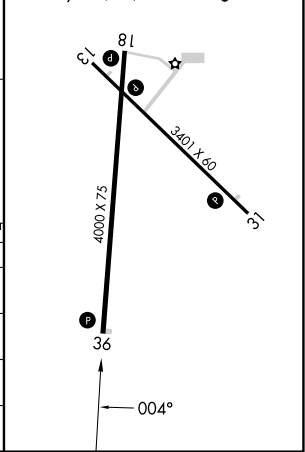
▼ For uncompensated Baro-VNAV systems, LNAV/VNAV NA below -6°C (22°F) or above 54°C (130°F). Baro-VNAV and VDP NA when using lowa City altimeter setting. When local altimeter setting not received, use lowa City altimeter setting: increase LPV DA to 1064 feet and LNAV/VNAV DA to 1072 feet; increase all MDAs 80 feet and visibility LNAV and Circling Cat C ½ SM.

MISSED APPROACH: Climb to 3000 direct GANAD and hold.

AWOS-3 127.825	CHICAGO CENTER 135.6 370.95	UNICOM 122.7 (CTAF) 0
--------------------------	---------------------------------------	---------------------------------



ELEV 754	TDZE 752
MIRL Rwy's 13-31 and 18-36 0	
REIL Rwy's 18, 13, 31 and 36 0	



CATEGORY	A	B	C	D
LPV DA		1002-1 250 (300-1)		NA
LNAV/VNAV DA		1010-1 258 (300-1)		NA
LNAV MDA		1100-1 348 (400-1)		NA
CIRCLING	1200-1 446 (500-1)	1260-1 506 (600-1)	1500-2¼ 746 (800-2¼)	NA

NC-3, 28 NOV 2024 to 26 DEC 2024

NC-3, 28 NOV 2024 to 26 DEC 2024