

VOR/DME IOW 116.2 Chan 109	APP CRS 006°	Rwy Idg 4000 TDZE 752 Apt Elev 754
--	------------------------	---

VOR RWY 36

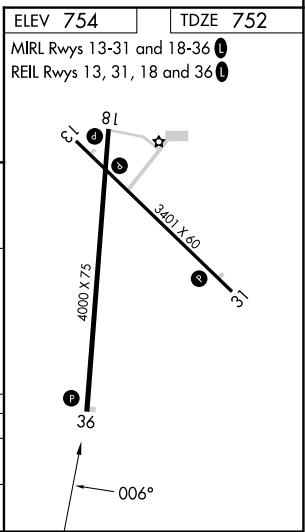
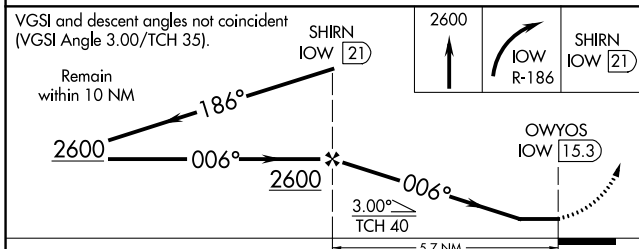
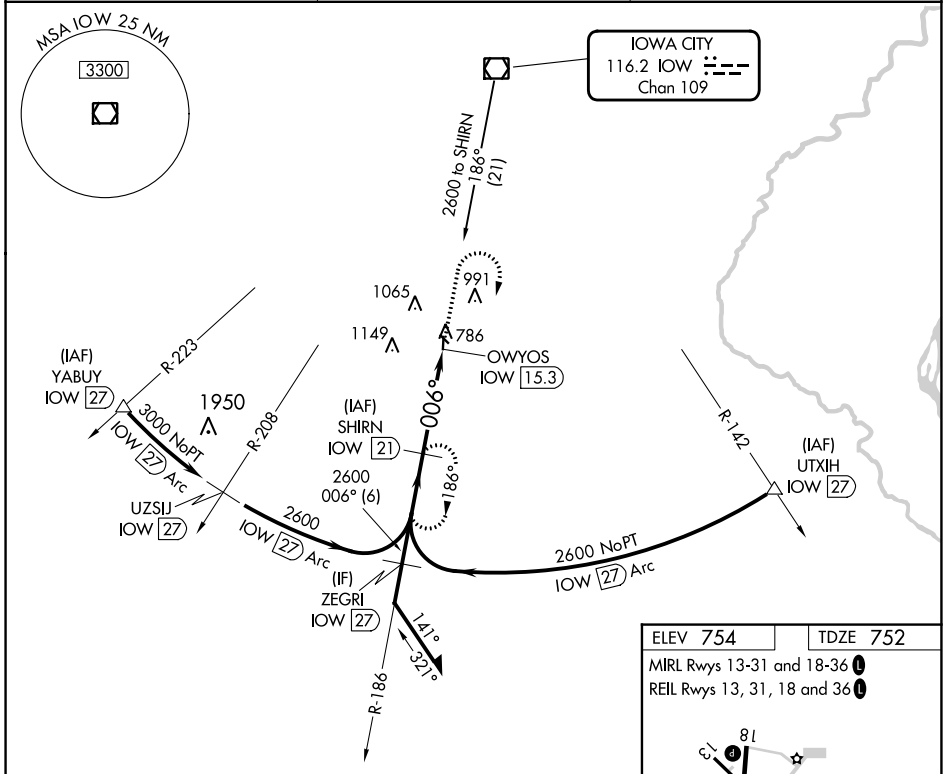
WASHINGTON MUNI (AWG)

DME Required.

▼ When local altimeter setting not received, use Iowa City altimeter setting and increase all MDAs 80 feet and visibility S-36 Cat C and Circling Cat C 1/4 SM.

▲ MISSED APPROACH: Climb to 2600 then right turn on IOW VOR/DME R-186 to SHIRN/21 DME and hold.

AWOS-3 127.825	CHICAGO CENTER 135.6 370.95	UNICOM 122.7 (CTAF) 0
--------------------------	---------------------------------------	---------------------------------



CATEGORY	A	B	C	D
S-36	1240-1	488 (500-1)	1240-1 3/8 488 (500-1 3/8)	NA
C CIRCLING	1240-1 486 (500-1)	1260-1 506 (600-1)	1500-2 1/4 746 (800-2 1/4)	NA

NC-3, 28 NOV 2024 to 26 DEC 2024

NC-3, 28 NOV 2024 to 26 DEC 2024