

| | | | |
|--|------------------------|-----------------------------|---|
| WAAS CH 97628 W06A | APP CRS 058° | Rwy Idg TDZE Apt Elev | 5004 733 733 |
|--|------------------------|-----------------------------|---|

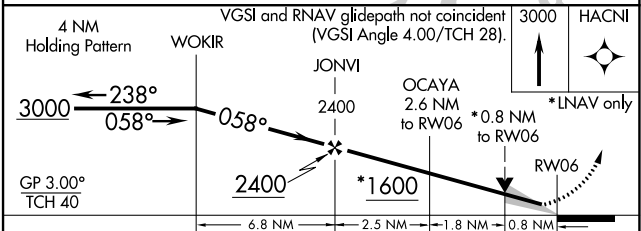
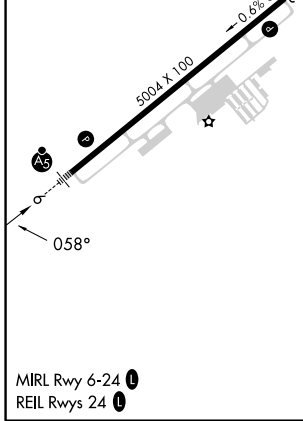
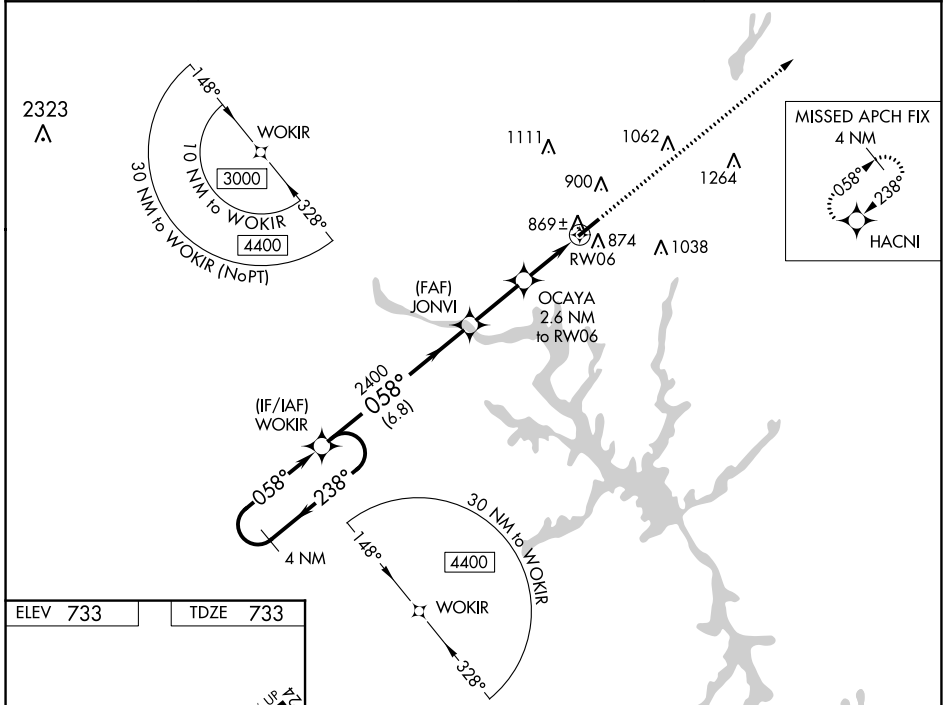
RNAV (GPS) RWY 6

DAVIDSON COUNTY EXEC (E.XX)

⚠ For uncompensated Baro-VNAV systems, LNAV/VNAV NA below -16°C (4°F) or above 54°C (130°F). When local altimeter setting not received, use Salisbury altimeter setting and increase all DA 37 feet and all MDA 40, increase LPV, LNAV/VNAV all Cats and LNAV Cat C visibility 1/8 mile. DME/DME RNP-0.3 NA. Baro-VNAV and VDP NA when using Salisbury altimeter setting.

MALSR MISSED APPROACH: Climb to 3000 direct HACNI and hold.

| | | | |
|--------------------------|--|-----------------------|---------------------------------|
| AWOS-3 119.825 | GREENSBORO APP CON 126.6 327.075 | GCO 135.075 | UNICOM 122.8 (CTAF) 0 |
|--------------------------|--|-----------------------|---------------------------------|



| CATEGORY | A | B | C | D |
|--------------|-----------------------|-----------------------|-------------------------------|----|
| LPV DA | 983-7/8 | 250 (300-7/8) | | NA |
| LNAV/VNAV DA | 1020-1 | 287 (300-1) | | NA |
| LNAV MDA | 1120-1 | 387 (400-1) | 1120-1 1/8 387 (400-1 1/8) | NA |
| CIRCLING | 1220-1 487 (500-1) | 1240-1 507 (600-1) | 1340-1 3/4 607 (700-1 3/4) | NA |

SE-2, 28 NOV 2024 to 26 DEC 2024

SE-2, 28 NOV 2024 to 26 DEC 2024