

WAAS CH 82335 W19A	APP CRS 189°	Rwy Idg TDZE Apt Elev	5000 1077 1077
---------------------------------	------------------------	-----------------------------	---

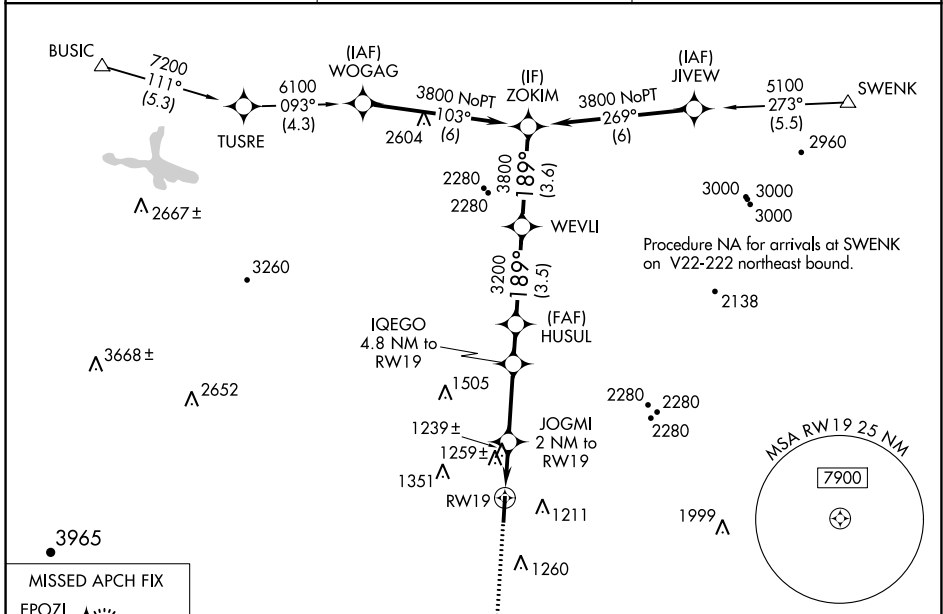
RNAV (GPS) RWY 19

RUTHERFORD COUNTY/MARCHMAN FLD (FQD)

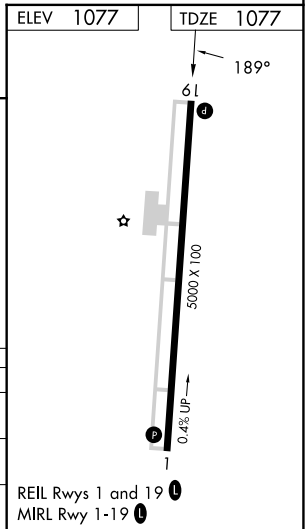
▼ DME/DME RNP-0.3 NA. When local altimeter setting not received, use Shelby-Cleveland County Rgnl altimeter setting and increase all MDA 80 feet and increase LP and LNAV Cat C and D ½ mile, increase Circling Cat C and D visibility ¼ mile. Rwy 19 helicopter visibility reduction below ¾ mile NA.

MISSED APPROACH: Climb to 3000 direct EPOZI and hold.

AWOS-3 118,275	GREER APP CON ★ 119.4 350.2	UNICOM 122.8 (CTAF) 0
--------------------------	---------------------------------------	---------------------------------



3000	EPOZI				
*LNAV only	JOGMI 2 NM to RW19	IQEGO 4.8 NM to RW19	HUSUL	WEVLI	ZOKIM
	*1 NM to RW19		3200	3800	3800
	RW19		2720		
			≤3.15°		
			TCH 40		
	1 NM	1 NM	2.8 NM	1.4 NM	3.5 NM
					3.6 NM
CATEGORY	A	B	C	D	
LP MDA	1500-1	423 (500-1)	1500-1¼	423 (500-1¼)	
LNAV MDA	1520-1	443 (500-1)	1520-1¾	443 (500-1¾)	
CIRCLING	1560-1	1620-1	1640-1½	1820-2½	
	483 (500-1)	543 (600-1)	563 (600-1½)	743 (800-2½)	



SE-2, 28 NOV 2024 to 26 DEC 2024

SE-2, 28 NOV 2024 to 26 DEC 2024