

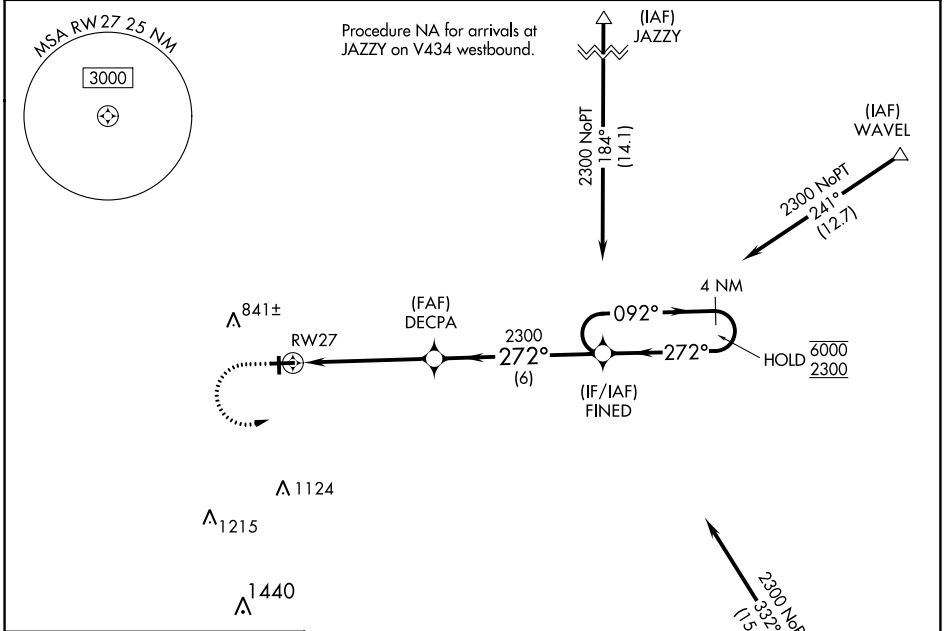
WAAS CH 61239 W27A	APP CRS 272°	Rwy Idg TDZE Apt Elev	4501 651 654
--	------------------------	-----------------------------	---

RNAV (GPS) RWY 27

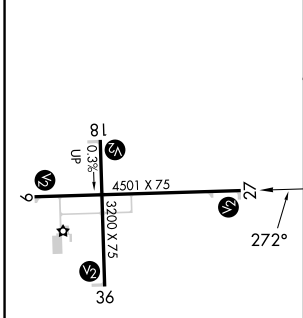
EDGAR COUNTY (PRG)

RNP APCH.	MISSED APPROACH: Climb to 1120 then climbing left turn to 2300 direct FINED and hold.
⚠ Circling Rwy 18 NA at night. Rwy 27 helicopter visibility reduction below 3/4 SM NA. For uncompensated Baro-VNAV systems, LNAV/VNAV NA below -16°C or above 54°C.	

AWOS-3 124.175	HULMAN APP CON 125.45 339.8	UNICOM 123.0 (CTAF) 0
--------------------------	---------------------------------------	---------------------------------



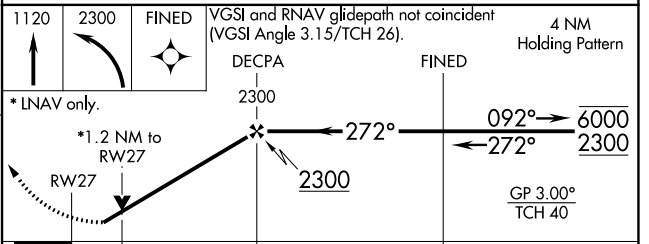
ELEV 654	TDZE 651
----------	----------



Procedure NA for arrivals on TTH VORTAC airway radials 254 CW 303.

(IAF) TERRE HAUTE TTH

2300 NoPT 322° (15.3)



CATEGORY	A	B	C	D
LPV DA	901-1 250 (300-1)			
LNAV/VNAV DA	925-1 274 (300-1)			
LNAV MDA	1080-1 429 (500-1)	1080-1¼ 429 (500-1¼)		
C CIRCLING	1080-1 426 (500-1)	1120-1 466 (500-1)	1200-1½ 546 (600-1½)	1320-2 666 (700-2)