

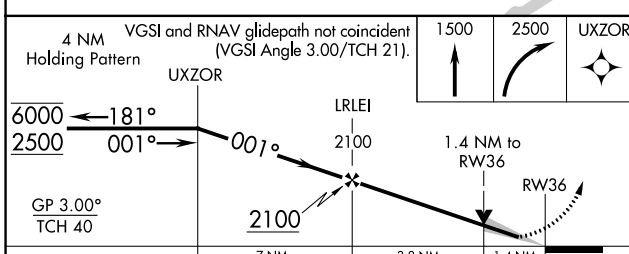
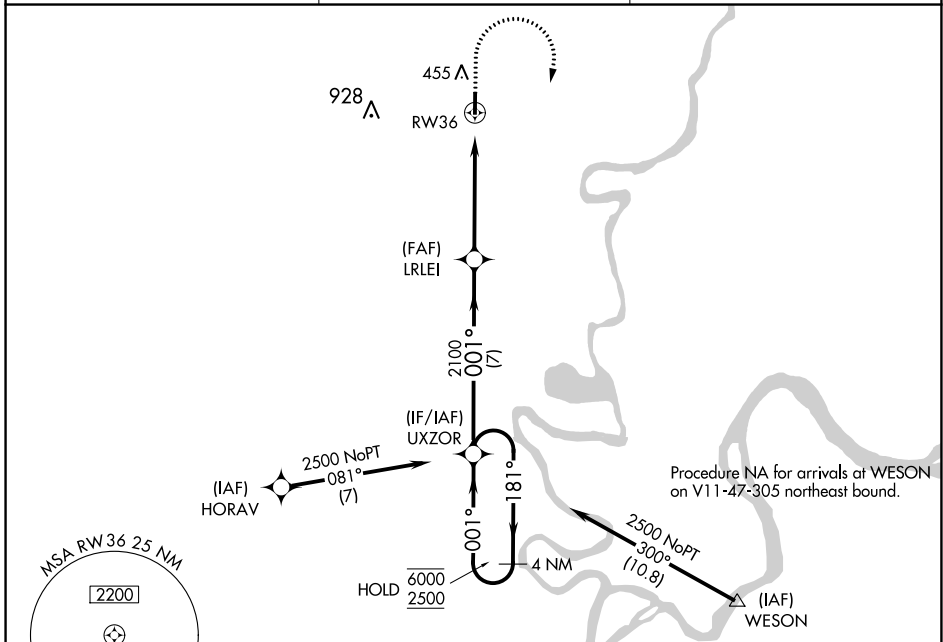
WAAS CH 77625 W36A	APP CRS 001°	Rwy Idg TDZE Apt Elev	4000 386 388
--	------------------------	-----------------------------	---

RNAV (GPS) RWY 36

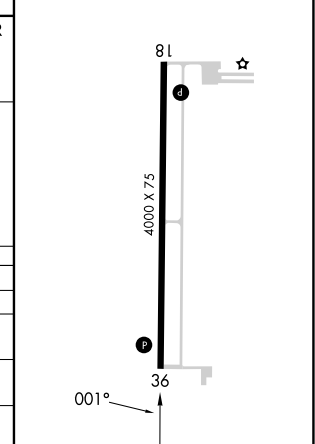
CARMI MUNI (CUL)

RNP APCH - GPS.	MISSED APPROACH: Climb to 1500 then climbing right turn to 2500 direct UXZOR and hold.
For uncompensated Baro-VNAV systems, LNAV/VNAV NA below -19°C or above 54°C.	

AWOS-3 118.425	EVANSVILLE APP CON * 127.35 343.7	UNICOM 122.8 (CTAF)
--------------------------	---	-------------------------------



ELEV 388	TDZE 386
REIL Rwy 36	
MIRL Rwy 18-36	



CATEGORY	A	B	C	D
LPV DA	636- ³ / ₄	250 (300- ³ / ₄)		NA
LNAV/VNAV DA	796-1 ¹ / ₈	410 (500-1 ¹ / ₈)		NA
LNAV MDA	860-1	474 (500-1)	860-1 ³ / ₈ 474 (500-1 ³ / ₈)	NA
CIRCLING	860-1	472 (500-1)	1000-1 ³ / ₄ 612 (700-1 ³ / ₄)	NA

EC-3, 28 NOV 2024 to 26 DEC 2024

EC-3, 28 NOV 2024 to 26 DEC 2024