

| | | | |
|--|------------------------|-----------------------------|---|
| WAAS CH 56433 W27A | APP CRS 273° | Rwy Idg TDZE Apt Elev | 4500 858 858 |
|--|------------------------|-----------------------------|---|

RNAV (GPS) RWY 27

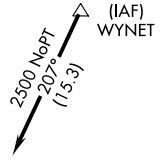
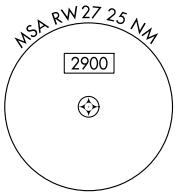
KEWANEE MUNI (EZI)

Baro-VNAV NA. DME/DME RNP-0.3 NA. Use Galesburg altimeter setting; when not received, use Moline altimeter setting and increase all DA 29 feet and all MDA 40 feet, increase LPV all Cats and LNAV Cat C visibility 1/8 mile, and Circling Cat C visibility 1/4 mile.

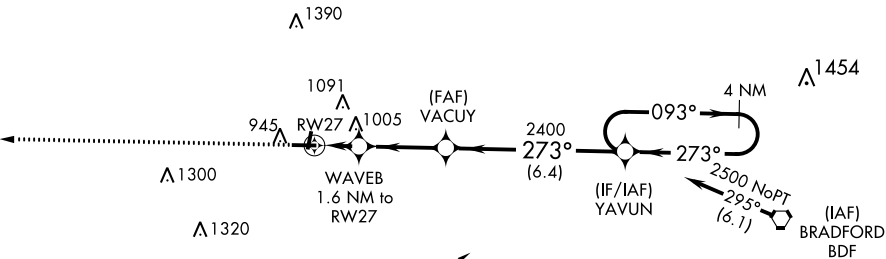
MISSED APPROACH: Climb to 2400 direct WIKOK and hold.

QUAD CITY APP CON *
133.275 257.8

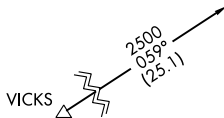
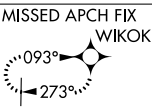
UNICOM
122.8 (CTAF) 0



Procedure NA for arrivals at WYNET on V8-38 eastbound.

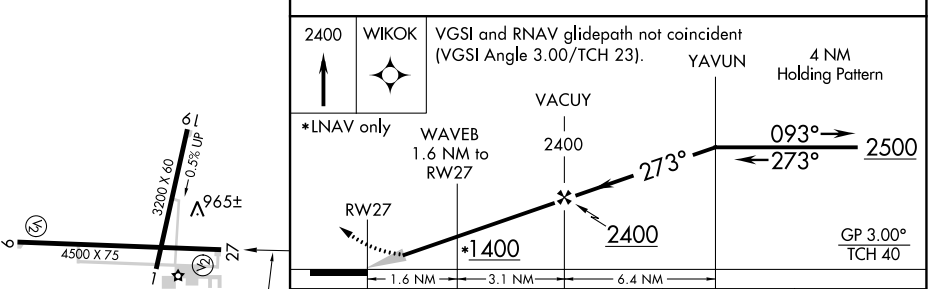


Procedure NA for arrivals at BDF VORTAC on V156 eastbound.



Procedure NA for arrivals at VICKS on V434 northwest bound.

| | |
|----------|----------|
| ELEV 858 | TDZE 858 |
|----------|----------|



| | CATEGORY | A | B | C | D |
|-----------------|----------|-----------------------|-----------------------|-------------------------------|----|
| LPV DA | | 1183-1/8 | 325 (400-1/8) | | NA |
| LNAV/VNAV DA | | 1212-1/4 | 354 (400-1/4) | | NA |
| LNAV MDA | | 1340-1 | 482 (500-1) | 1340-1 3/8 482 (500-1 3/8) | NA |
| CIRCLING | | 1340-1 482 (500-1) | 1520-1 662 (700-1) | 1520-1 3/4 662 (700-1 3/4) | NA |

MIRL Rwy 1-19 and 9-27 0