

WAAS CH <b>72833</b>	APP CRS <b>093°</b>	Rwy Idg TDZE <b>856</b>	<b>4500</b>
<b>W09A</b>		Apt Elev <b>858</b>	

# RNAV (GPS) RWY 9

KEWANEE MUNI (EZI)

RNP APCH.

**NA** Rwy 9 helicopter visibility reduction below 3/4 SM NA. Baro-VNAV NA. Use Galesburg altimeter setting, when not received, use Moline altimeter setting and increase all DA to 1210 feet and all visibilities 1/2 SM; increase all MDA 40 feet, and Circling Cat C visibility 1/4 SM.

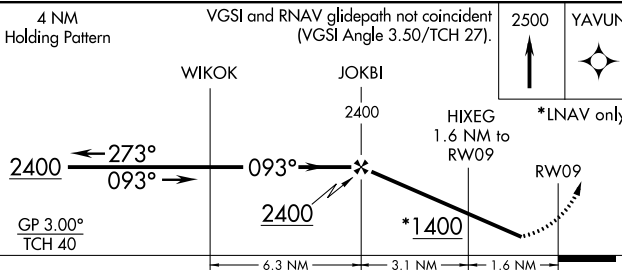
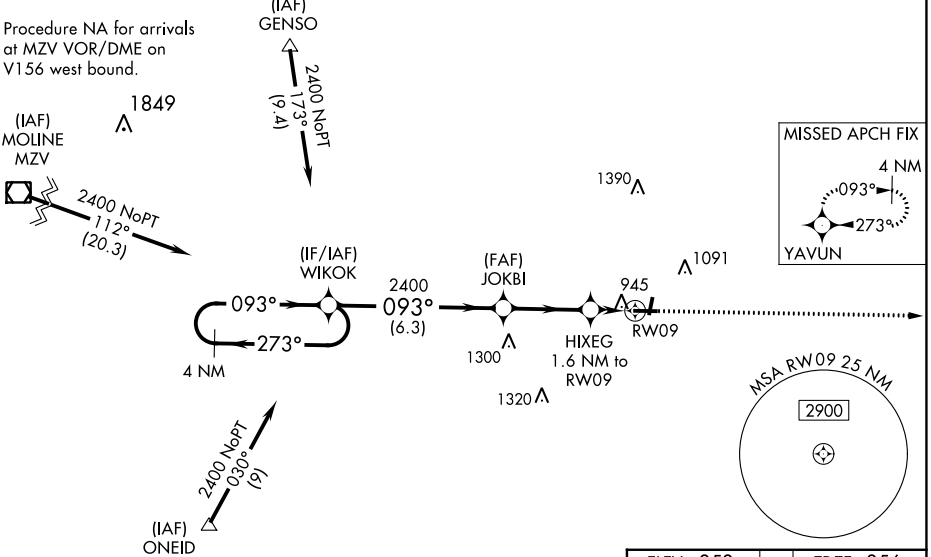
**MISSED APPROACH:**  
Climb to 2500 direct YAVUN and hold.

QUAD CITY APP CON ★  
**133.275 257.8**

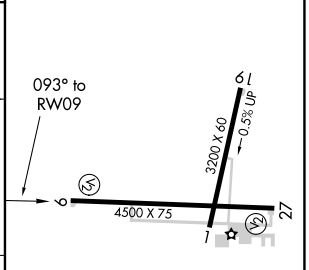
UNICOM  
**122.8 (CTAF) 0**

Procedure NA for arrivals at GENSO on V129 northwest bound.

Procedure NA for arrivals at MZV VOR/DME on V156 west bound.



ELEV 858	TDZE 856
----------	----------



CATEGORY	A	B	C	D
LPV DA	1181-1 1/8	325 (400-1 1/8)		NA
LNAV/VNAV DA	1181-1 1/8	325 (400-1 1/8)		NA
LNAV MDA	1300-1	444 (500-1)	1300-1 3/8 444 (500-1 3/8)	NA
<b>C</b> CIRCLING	1340-1 482 (500-1)	1520-1 662 (700-1)	1520-1 3/4 662 (700-1 3/4)	NA

MIRL Rwy's 1-19 and 9-27 0

EC-3, 28 NOV 2024 to 26 DEC 2024

EC-3, 28 NOV 2024 to 26 DEC 2024