

LOC/DME I-FKO 111.1 Chan 48	APP CRS 152°	Rwy Idg 5100 TDZE 58 Apt Elev 58
---	------------------------	---

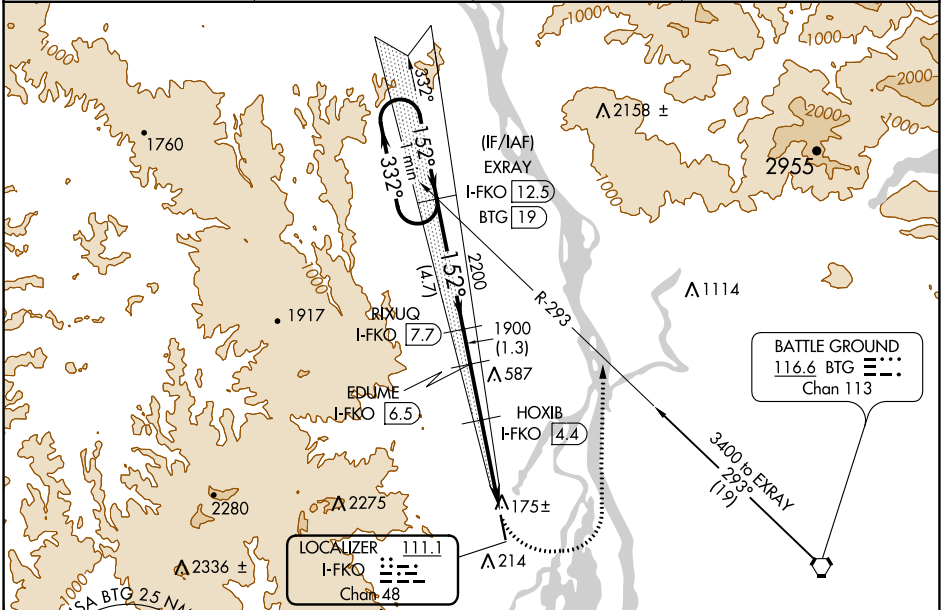
LOC/DME RWY 15

SCAPPOOSE (SPB)

⚠ Circling NA west of Rwy 15-33. When local altimeter setting not received, use Portland Intl altimeter setting and increase all MDA 40 feet; increase S-15 Cat C/D visibility and Circling Cat C visibility 1/8 mile, Cat D visibility 1/4 mile. Helicopter visibility reduction below 1 SM NA. Night Landing Rwy 15 NA.

MISSED APPROACH: Climbing left turn to 3000 on heading 020° and on BTG VORTAC R-293 to EXRAY/I-FKO 12.5 DME and hold.

ASOS 135.875	PORTLAND APP CON 124.35 299.2	CLNC DEL 121.65	UNICOM 122.8 (CTAF) 0
------------------------	---	---------------------------	---------------------------------

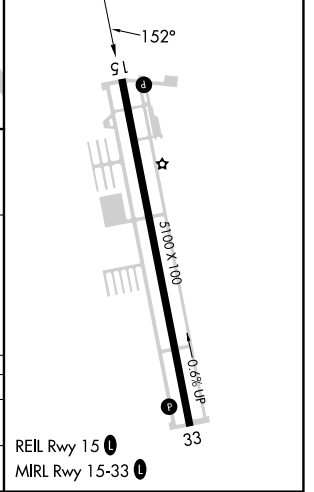
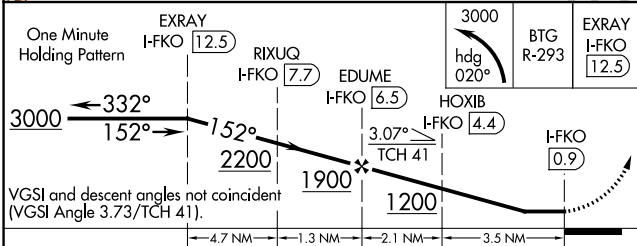


NW-1, 28 NOV 2024 to 26 DEC 2024

NW-1, 28 NOV 2024 to 26 DEC 2024



ELEV 58	TDZE 58
---------	---------



CATEGORY	A	B	C	D
S-15	660-1 602 (700-1)		660-1 3/4 602 (700-1 3/4)	
C CIRCLING	660-1 602 (700-1)		660-1 3/4 602 (700-1 3/4)	860-2 1/2 802 (900-2 1/2)