

WAAS CH <b>40403</b> <b>W36A</b>	APP CRS <b>359°</b>	Rwy Idg <b>4002</b> TDZE <b>682</b> Apt Elev <b>691</b>
--	------------------------	---

# RNAV (GPS) RWY 36

LITCHFIELD MUNI (3LF)

RNP APCH - GPS.

**⚠** Baro-VNAV and VDP NA when using Taylorville altimeter setting. For uncompensated Baro-VNAV systems, LNAV/VNAV NA below -16°C or above 54°C. When local altimeter setting not received, use Taylorville altimeter setting and increase LPV DA to 1005 feet and all visibilities ¼ SM, increase LNAV/VNAV DA to 1145 and all visibilities ¼ SM; increase all MDAs 80 feet and increase LNAV Cat C visibility ½ SM.

MISSED APPROACH: Climb to 3000 direct KUYLE and hold.

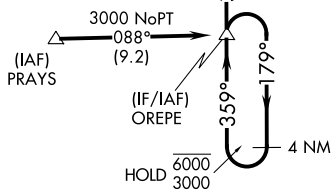
AWOS-3PT  
**118.175**

ST. LOUIS APP CON  
**124.2 353.9**

UNICOM  
**122.8 (CTAF) 0**



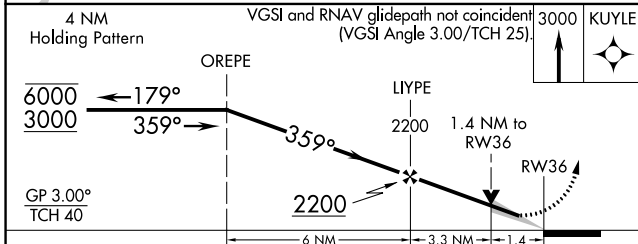
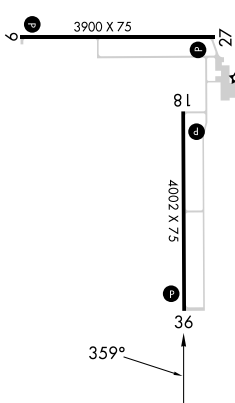
Procedure NA for arrivals at PRAYS on V14 westbound and on V69 southbound



NoPT for arrival at OREPE on V191 northeast bound.

ELEV 691 | TDZE 682

MIRL Rwy 9-27 and 18-36 **1**  
REIL Rwy 9, 18, 27 and 36 **1**



CATEGORY	A	B	C	D
LPV DA	932-3/4 250 (300-3/4)			NA
LNAV/VNAV DA	1072-1 1/8 390 (400-1 1/8)			NA
LNAV MDA	1140-1 458 (500-1)		1140-1 3/8 458 (500-1 3/8)	