

KINGDOM FOUR DEPARTURE
(KING4.TTT) 251AN24

ROCKWALL, TEXAS
RALPH M HALL/ROCKWALL MUNI (F46)

(KING4.TTT) 24305
KINGDOM FOUR DEPARTURE

AL-6323 (FAA)

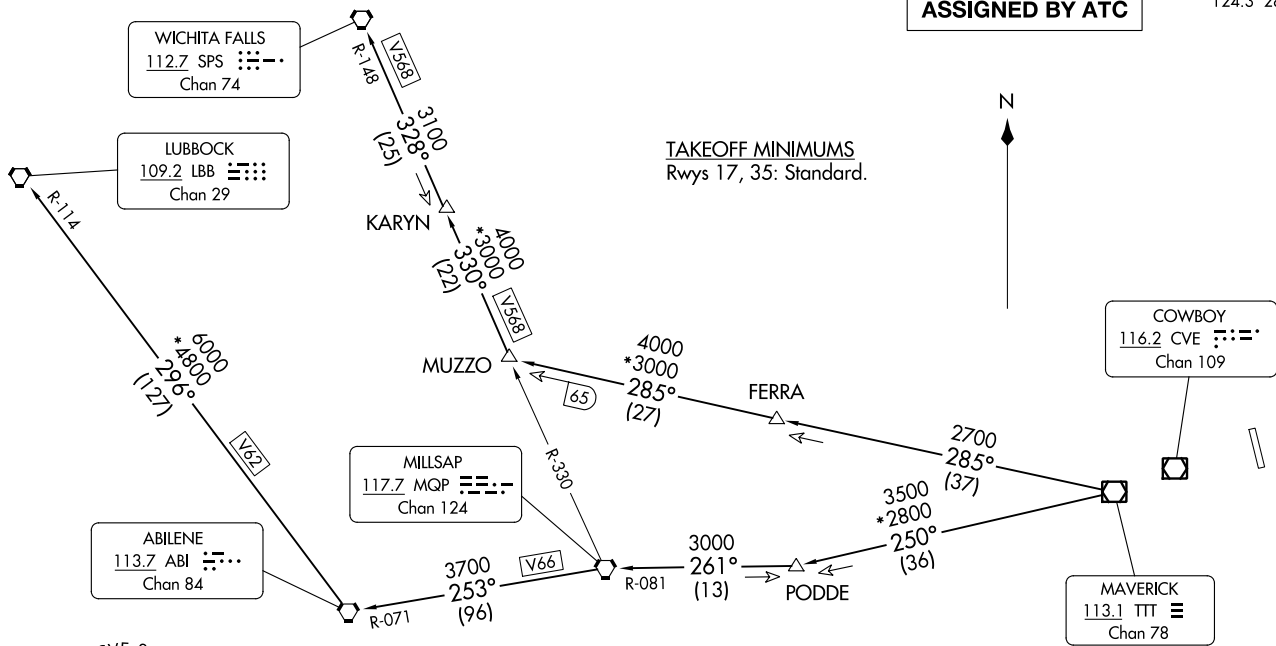
ROCKWALL, TEXAS
RALPH M HALL/ROCKWALL MUNI (F46)

RADAR and DME required.

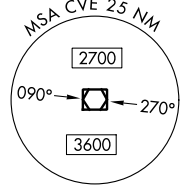
**TOP ALTITUDE:
ASSIGNED BY ATC**

LONE STAR DEP CON
124.3 282.275
CTAF
122.8

TAKEOFF MINIMUMS
Rwys 17, 35: Standard.



- NOTE: LUBBOCK Transition: For all aircraft overflying the MQP VORTAC westbound or direct.
- NOTE: MILLSAP Transition: For all aircraft overflying the MQP VORTAC westbound or direct.
- NOTE: PODDE Transition: ATC assigned.
- NOTE: WICHITA FALLS Transition: For all aircraft landing within the Wichita Falls terminal area or overflying the SPS VORTAC.
- NOTE: For all aircraft requesting 17000 and below.



NOTE: Chart not to scale.

(CONTINUED ON FOLLOWING PAGE)

KINGDOM FOUR DEPARTURE



DEPARTURE ROUTE DESCRIPTION

When entering controlled airspace, fly assigned heading for RADAR vectors to appropriate route. Maintain ATC assigned altitude.

LUBBOCK TRANSITION (KING4.LBB): From over TTT VOR/DME on TTT R-250 to PODDE, then on MQP R-081 to MQP VORTAC, then on MQP R-253 and ABI R-071 to ABI VORTAC, then on ABI R-296 and LBB R-114 to LBB VORTAC.

MILLSAP TRANSITION (KING4.MQP): From over TTT VOR/DME on TTT R-250 to PODDE, then on MQP R-081 to MQP VORTAC.

PODDE TRANSITION (KING4.PODDE): From over TTT VOR/DME on TTT R-250 to PODDE.

WICHITA FALLS TRANSITION (KING4.SPS): From over TTT VOR/DME on TTT R-285 to MUZZO, then on MQP R-330 and SPS R-148 to KARYN, then on SPS R-148 to SPS VORTAC.

SC-2, 28 NOV 2024 to 26 DEC 2024

SC-2, 28 NOV 2024 to 26 DEC 2024