

NANDR TWO DEPARTURE (RNAV)

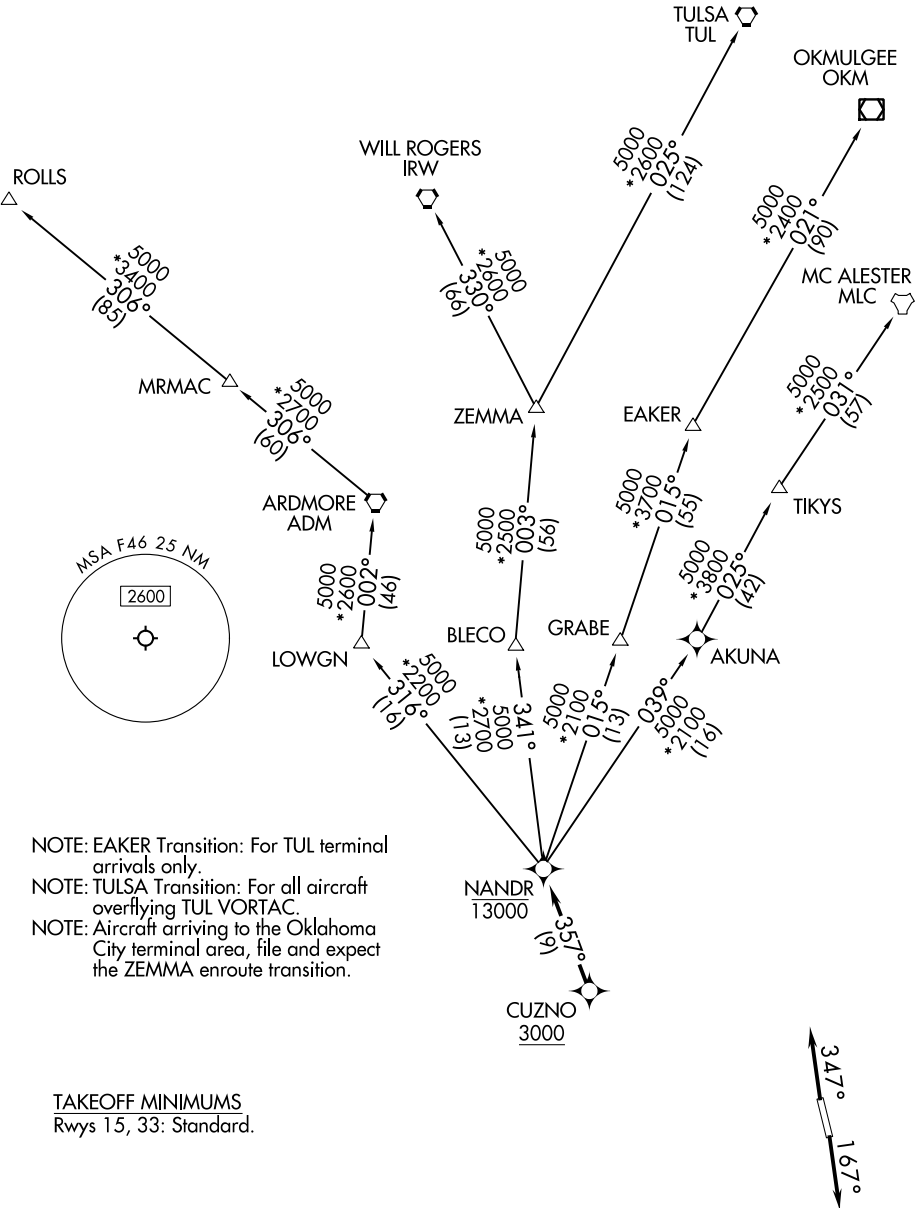
ROCKWALL, TEXAS

LONE STAR DEP CON
124.3 282.275

RNAV 1 - DME/DME/IRU or GPS.

RADAR required.

**TOP ALTITUDE:
ASSIGNED BY ATC**



SC-2, 28 NOV 2024 to 26 DEC 2024

SC-2, 28 NOV 2024 to 26 DEC 2024

NOTE: Chart not to scale.

(CONTINUED ON FOLLOWING PAGE)

NANDR TWO DEPARTURE (RNAV)

(NANDR2.NANDR) 20APR23

ROCKWALL, TEXAS

RALPH M HALL/ROCKWALL MUNI (F46)

NANDR TWO DEPARTURE (RNAV)



DEPARTURE ROUTE DESCRIPTION

TAKEOFF RUNWAY 17: Climb on heading 167° or as assigned by ATC, thence...

TAKEOFF RUNWAY 35: Climb on heading 347° or as assigned by ATC, thence...

. . . . expect RADAR vectors to cross CUZNO at or above 3000, then on track 357° to cross NANDR at or below 13000, then on assigned transition.

EAKER TRANSITION (NANDR2.EAKER)

MC ALESTER TRANSITION (NANDR2.MLC)

OKMULGEE TRANSITION (NANDR2.OKM)

ROLLS TRANSITION (NANDR2.ROLLS)

TULSA TRANSITION (NANDR2.TUL)

WILL ROGERS TRANSITION (NANDR2.IRW)

ZEMMA TRANSITION (NANDR2.ZEMMA)

SC-2, 28 NOV 2024 to 26 DEC 2024

SC-2, 28 NOV 2024 to 26 DEC 2024