

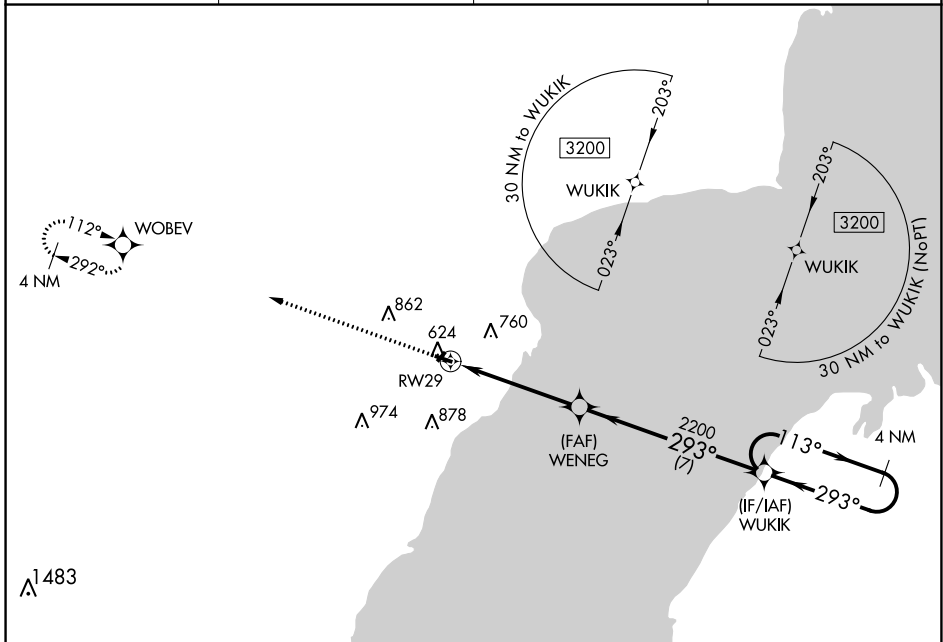
APP CRS	Rwy Idg	<b>3198</b>
<b>293°</b>	TDZE	<b>604</b>
	Apt Elev	<b>604</b>

# RNAV (GPS) RWY 29

OCONTO/J DOUGLAS BAKE MUNI (OCQ)

RNP APCH - GPS.	<p><b>▼</b> When local altimeter setting not received, use Menominee, WI altimeter setting. Procedure NA at night. Rwy 29 helicopter visibility reduction below 3/4 SM NA. Circling NA to Rwy's 4 and 22.</p>	<p><b>MISSED APPROACH:</b> Climb to 3200 direct WOBEV and hold.</p>
-----------------	---	---

AWOS-3 <b>120.925</b>	MNM AWOS-3PT <b>121.45</b>	GREEN BAY APP CON ★ <b>120.3 338.2</b>	UNICOM <b>122.8 (CTAF) ①</b>
--------------------------	-------------------------------	---	---------------------------------



EC-3, 28 NOV 2024 to 26 DEC 2024

EC-3, 28 NOV 2024 to 26 DEC 2024

ELEV 604		TDZE 604	
----------	--	----------	--

3200

↑

WOBEV

WUKIK

4 NM Holding Pattern

VGSi and descent angles not coincident (VGSi Angle 4.00/TCH 31).

REIL Rwy's 11 and 29 ①

MIRL Rwy 11-29 ①

CATEGORY	A	B	C	D
RNAV MDA	1120-1	516 (600-1)	1120-1 3/8 516 (600-1 3/8)	NA
CIRCLING	1120-1 516 (600-1)	1220-1 616 (700-1)	1260-1 3/4 656 (700-1 3/4)	NA