

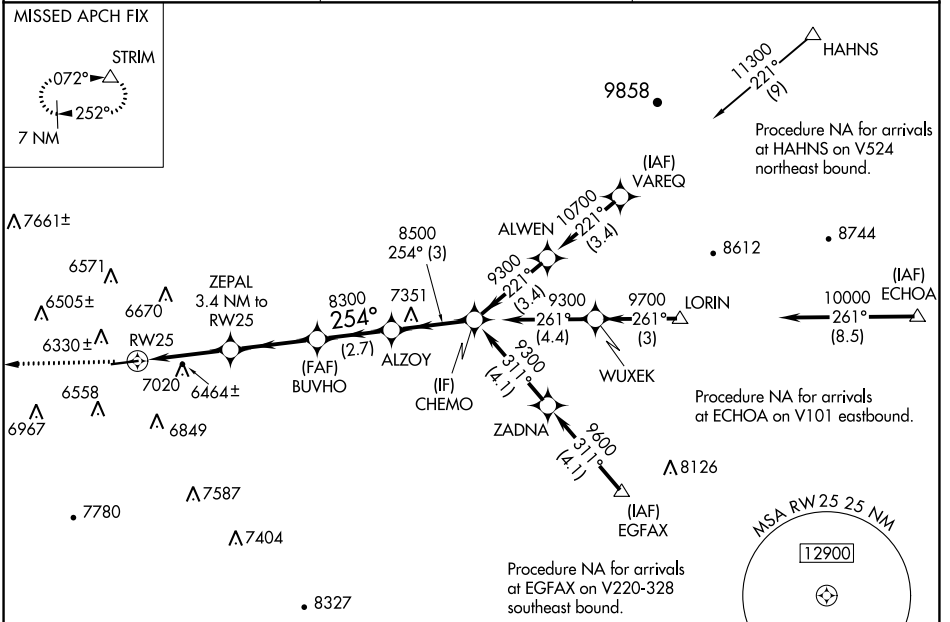
WAAS CH <b>93841</b> <b>W25A</b>	APP CRS <b>254°</b>	Rwy Idg TDZE Apt Elev	<b>5606</b> <b>6198</b> <b>6198</b>
--	------------------------	-----------------------------	---

# RNAV (GPS) RWY 25

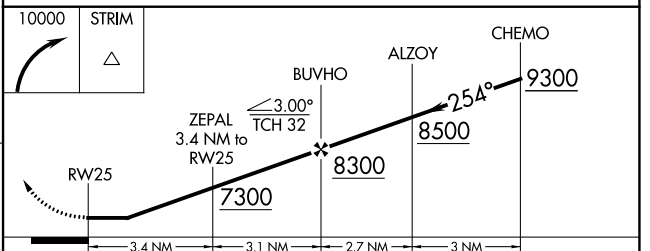
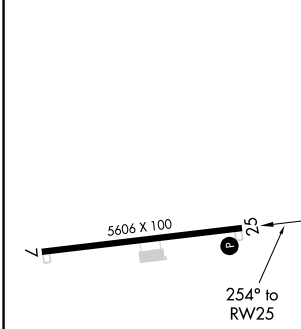
CRAIG-MOFFAT (CAG)

RNP APCH.	<p>⚠ Circling NA for Cat D south of Rwy 7-25. Straight-in and Circling Rwy 25 NA at night. Rwy 25 helicopter visibility reduction below 1 SM NA.</p> <p>❄ -31°C</p>	<p>MISSED APPROACH: Climbing right turn to 10000 direct STRIM and hold, continue climb-in-hold to 10000.</p>
-----------	---	--

ASOS <b>135.425</b>	DENVER CENTER <b>120.475 235.975</b>	UNICOM <b>122.8 (CTAF) 0</b>
------------------------	---	---------------------------------



ELEV 6198	TDZE 6198
-----------	-----------



CATEGORY	A	B	C	D
LP MDA	6720-1	522 (600-1)	6720-1½	522 (600-1½)
LNAV MDA	7280-1¼ 1082 (1100-1¼)	7280-1½ 1082 (1100-1½)	7280-3	1082 (1100-3)
<input checked="" type="checkbox"/> CIRCLING	7280-1¼ 1082 (1100-1¼)	7320-1½ 1122 (1300-1½)	7720-3	1522 (1600-3)

REIL Rwy 7 and 25 0  
MIRL Rwy 7-25 0

SW-1, 28 NOV 2024 to 26 DEC 2024

SW-1, 28 NOV 2024 to 26 DEC 2024