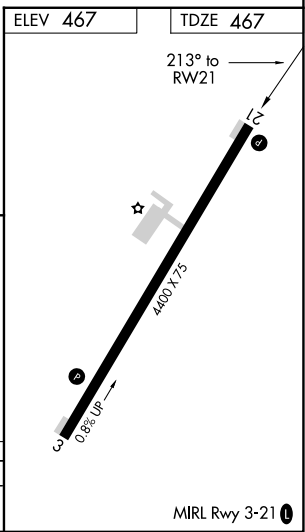
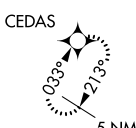
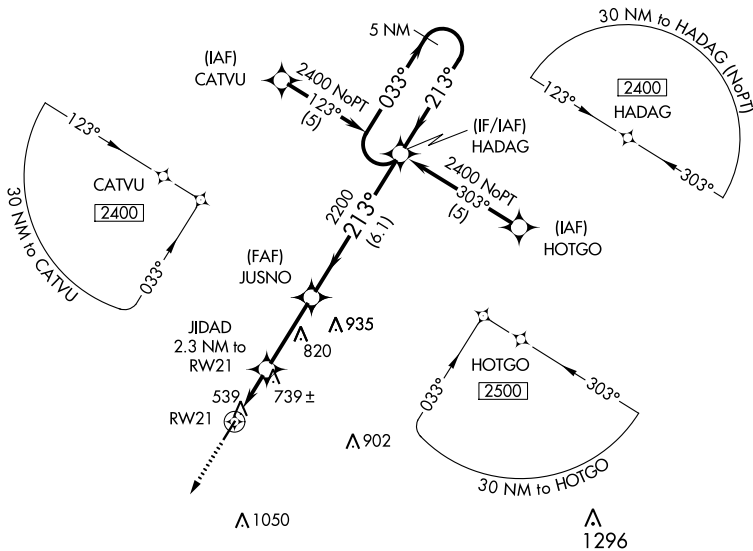


APP CRS	Rwy Idg <b>4400</b>
<b>213°</b>	TDZE <b>467</b>
	Apt Elev <b>467</b>

# RNAV (GPS) RWY 21

RIPLEY (25M)

RNP APCH.		MISSED APPROACH: Climb to 2500 direct CEDAS and hold.
▼	Use Corinth altimeter setting; when not received, use Tupelo altimeter setting and increase all MDA 40 feet, and increase LNAV Cat C visibility 1/4 mile. Procedure NA at night. Rwy 21 helicopter visibility reduction below 1 SM NA.	
CRX AWOS-3PT <b>118.675</b>	MEMPHIS CENTER <b>135.9 260.6</b>	UNICOM <b>122.8 (CTAF) 0</b>



2500	CEDAS	VGSI and descent angles not coincident. (VGSI Angle 3.50/TCH 16)		5 NM Holding Pattern
↑	☆	JIDAD 2.3 NM to RWY 21	JUSNO	HADAG
RWY 21	1220	2.3 NM	2.9 NM	6.1 NM
	≤ 3.04° TCH 40	213°	033°	2400
CATEGORY	A	B	C	D
LNAV MDA	1060-1	593 (600-1)	1060-1½ 593 (600-1½)	NA

SC-4, 28 NOV 2024 to 26 DEC 2024

SC-4, 28 NOV 2024 to 26 DEC 2024