

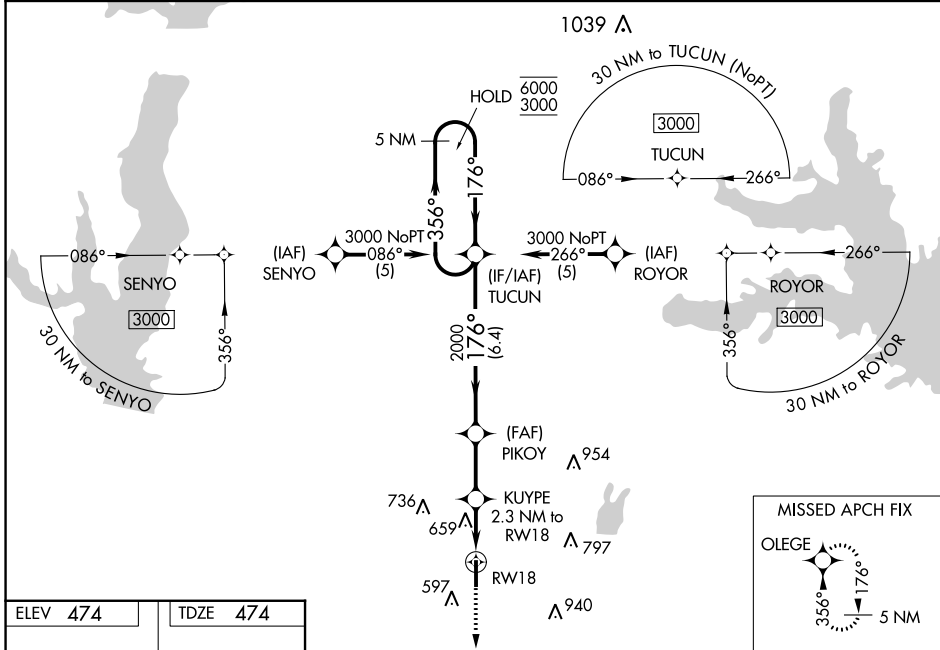
WAAS CH <b>77699</b> <b>W18A</b>	APP CRS <b>176°</b>	Rwy Idg <b>5006</b> TDZE <b>474</b> Apt Elev <b>474</b>
--	------------------------	---

# RNAV (GPS) RWY 18

TERRELL MUNI (TRL)

RNP APCH - GPS.	<p><b>MISSED APPROACH:</b> Climb to 3000 direct OLEGE and hold.</p>
<p><b>⚠</b> Rwy 18 helicopter visibility reduction below 3/4 SM NA.                  For uncompensated Baro-VNAV systems,                  LNAV/VNAV NA below -7°C or above 54°C.</p>	

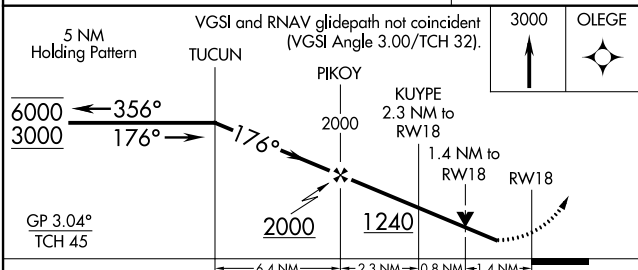
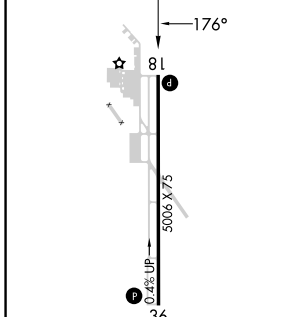
ASOS <b>119.275</b>	FORT WORTH CENTER <b>132.025 360.75</b>	UNICOM <b>123.075</b> (CTAF) <b>0</b>
------------------------	--	--



SC-2, 28 NOV 2024 to 26 DEC 2024

SC-2, 28 NOV 2024 to 26 DEC 2024

ELEV <b>474</b>	TDZE <b>474</b>
-----------------	-----------------



CATEGORY	A	B	C	D
LPV DA	756-7/8 282 (300-7/8)			NA
LNAV/VNAV DA	1013-1 1/2 539 (600-1 1/2)			NA
LNAV MDA	960-1	486 (500-1)	960-1 3/8 486 (500-1 3/8)	NA
<b>C</b> CIRCLING	1000-1 526 (600-1)	1020-1 546 (600-1)	1100-1 3/4 626 (700-1 3/4)	NA

RLS Rwy 18 **0**  
 REIL Rws 18 and 36  
 MIRL Rws 18-36 **0**