

WAAS CH 70502 W11A	APP CRS 112°	Rwy Idg TDZE 142 Apt Elev 142
--	------------------------	---

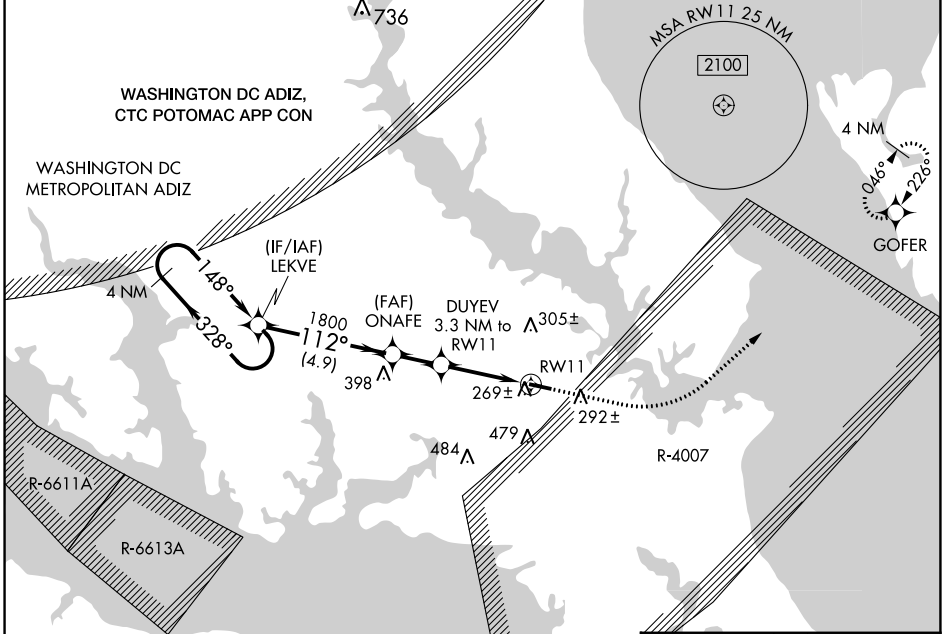
RNAV (GPS) RWY 11

ST MARY'S COUNTY RGNL (2W6)

⚠ For uncompensated Baro-VNAV systems, LNAV/VNAV NA below -15°C (5°F) or above 54°C (130°F). Rwy 11 helicopter visibility reduction below ¾ SM NA.
⚠ DME/DME RNP-0.3 NA.

MISSED APPROACH: Climb to 620 then climbing left turn to 2000 direct GOFER and hold.

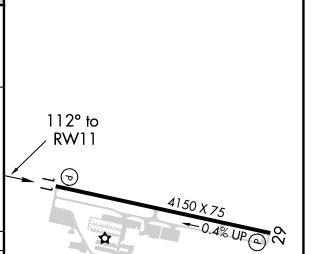
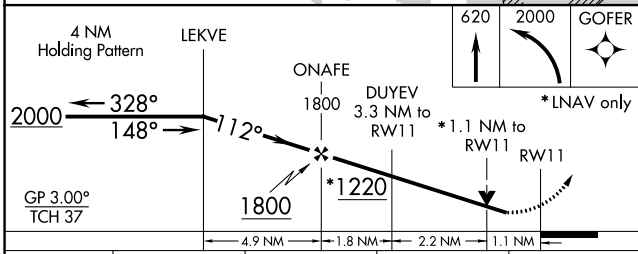
AWOS-3 119.575	PATUXENT APP CON ★ 121.0 250.3	UNICOM 123.0 (CTAF) 0
--------------------------	--	---------------------------------



NE-3, 28 NOV 2024 to 26 DEC 2024

NE-3, 28 NOV 2024 to 26 DEC 2024

ELEV 142	TDZE 142
----------	----------



CATEGORY	A	B	C	D
LPV DA		419-1	277 (300-1)	
LNAV/VNAV DA		503-1	361 (400-1)	
LNAV MDA		520-1	378 (400-1)	
C CIRCLING	660-1	518 (600-1)	840-2 698 (700-2)	840-2¼ 698 (700-2¼)

REIL Rwy 11 and 29 **0**
 MIRL Rwy 11-29 **0**