

WAAS CH 61313 W29A	APP CRS 292°	Rwy Idg TDZE 137 Apt Elev 142
--	------------------------	---

RNAV (GPS) RWY 29

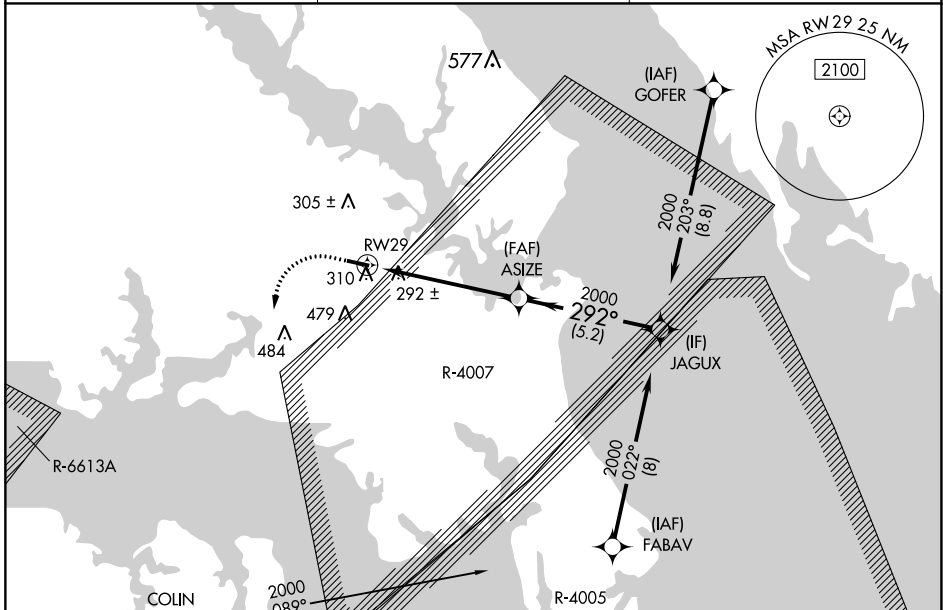
ST MARY'S COUNTY RGNL (2W6)

RNP APCH - GPS.

⚠ NA Rwy 29 helicopter visibility reduction below 3/4 SM NA. For uncompensated Baro-VNAV systems, LNAV/VNAV NA below -15°C or above 54°C. When local altimeter setting not received, use Patuxent River altimeter setting: increase LPV DA to 475 feet and all visibilities 1/8 SM, increase LNAV/VNAV DA to 688 feet and all visibilities 1/4 SM. Increase all MDAs 40 feet and LNAV visibility Cats C/D 1/8 SM.

MISSED APPROACH:
Climb to 700 then climbing left turn to 5000 direct COLIN and hold, continue climb in hold to 5000.

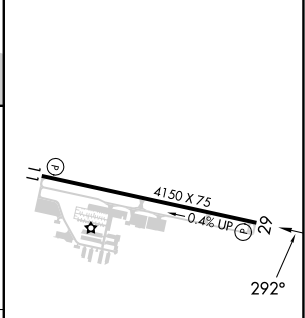
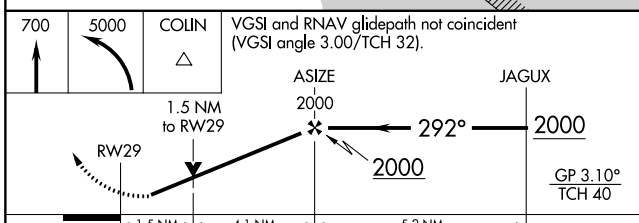
AWOS-3 119.575	PATUXENT APP CON ★ 121.0 250.3	UNICOM 123.0 (CTAF) 0
--------------------------	--	---------------------------------



NE-3, 28 NOV 2024 to 26 DEC 2024

NE-3, 28 NOV 2024 to 26 DEC 2024

ELEV	142	TDZE	137
------	-----	------	-----



CATEGORY	A	B	C	D
LPV DA		441-7/8	304 (300-7/8)	
LNAV/VNAV DA		654-1 3/8	517 (600-1 3/8)	
LNAV MDA	620-1	483 (500-1)	620-1 3/8	483 (500-1 3/8)
CIRCLING	660-1	518 (600-1)	840-2	840-2 1/4
			698 (700-2)	698 (700-2 1/4)

REIL Rwy 11 and 29 0
MIRL Rwy 11-29 0